

Product datasheet for **TA319544**

IL17 (IL17A) Mouse Monoclonal Antibody [Clone ID: 4H1524.1]

Product data:

Product Type:	Primary Antibodies
Clone Name:	4H1524.1
Applications:	WB
Recommended Dilution:	WB: 1ug/mL, FC: User Optimized
Reactivity:	Human
Host:	Mouse
Clonality:	Monoclonal
Immunogen:	Anti-IL-17A (MOUSE) Monoclonal Antibody was produced in mouse by repeated immunizations with mature full length recombinant human IL-17A produced in E.coli followed by hybridoma development.
Formulation:	0.02 M Potassium Phosphate, 0.15 M Sodium Chloride, pH 7.2
Concentration:	lot specific
Conjugation:	Biotin
Storage:	Store at -20°C as received.
Stability:	Stable for 12 months from date of receipt.
Gene Name:	interleukin 17A
Database Link:	NP_002181 Entrez Gene 3605 Human Q16552
Synonyms:	CTLA8; IL-17; IL-17A; IL17



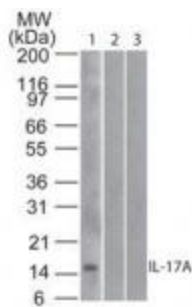
[View online »](#)

Note: IL17-A (also known as Interleukin-17) is a proinflammatory cytokine produced by activated T cells. This cytokine regulates the activities of NF-kappaB and mitogen-activated protein kinases. This cytokine can stimulate the expression of IL6 and cyclooxygenase-2 (PTGS2/COX-2), as well as enhance the production of nitric oxide (NO). High levels of this cytokine are associated with several chronic inflammatory diseases including rheumatoid arthritis, psoriasis and multiple sclerosis. IL17-A is the founding member of a group of cytokines called the IL17 family. IL17-A was originally identified as a transcript from a rodent T-cell hybridoma. To elicit its functions, IL17 binds to a type I cell surface receptor called IL17R of which there are at least three variants IL17RA, IL17RB, and IL17RC. Anti-IL-17A antibody is ideal for investigators involved in Immunology research.

Protein Families: Druggable Genome, Secreted Protein

Protein Pathways: Cytokine-cytokine receptor interaction

Product images:



Western Blot of Mouse Anti-IL-17A antibody Lane 1: human full length recombinant IL-17A protein Lane 2: mouse full length recombinant IL-17A protein Lane 3: rat full length recombinant IL-17A protein Load: 20 ng/lane Primary antibody: Anti-IL-17A antibody at 1ug/mL for overnight at 4°C