

## Product datasheet for **TA319531**

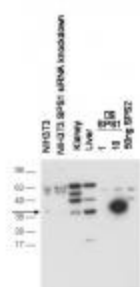
### Sephs1 Rabbit Polyclonal Antibody

#### Product data:

Product Type:	Primary Antibodies
Applications:	WB
Recommended Dilution:	ELISA: 1:5,000 - 1:20,000, WB: 1:500 - 1:2,000, IP: 1:100
Reactivity:	Mouse, Human, Rat
Host:	Rabbit
Isotype:	IgG
Clonality:	Polyclonal
Immunogen:	This antibody was prepared from whole rabbit serum produced by repeated immunizations with a full-length recombinant protein corresponding to mouse SPS1.
Formulation:	0.02 M Potassium Phosphate, 0.15 M Sodium Chloride, pH 7.2
Concentration:	lot specific
Conjugation:	Unconjugated
Storage:	Store at -20°C as received.
Stability:	Stable for 12 months from date of receipt.
Gene Name:	selenophosphate synthetase 1
Database Link:	<a href="#">NP_780609</a> <a href="#">Entrez Gene 22929 Human</a> <a href="#">Entrez Gene 291314 Rat</a> <a href="#">Entrez Gene 109079 Mouse</a> <a href="#">Q8BH69</a>
Synonyms:	MGC4980; SELD; SPS; SPS1
Note:	This antibody is suitable for Cancer, Immunology and Nuclear Signaling research. Selenophosphate synthetase 1 (SPS1) (also known as selenide water dikinase or selenium donor protein 1) is the homolog of the SelD gene product in E. coli. In E. coli, SelD generates the selenium donor for selenocysteine tRNA biosynthesis. The function of SPS1 in mammals is still unknown but appears to differ from that of E. coli SelD.



[View online »](#)

**Product images:**

Western blot using anti-SPS1 antibody shows detection of endogenous SPS1 in NIH3T3 cell. No signal is seen in lysates from cells after pre-treatment with SPS1 siRNA. Endogenous SPS1 can be detected in mouse kidney and liver tissue lysates. Negligible cross-reactivity is seen against recombinant SPS2. The primary antibody was used at a 1:1000 dilution. Personal Communication, D. Hatfield, NCI, Bethesda, MD.