

Product datasheet for **TA319530**

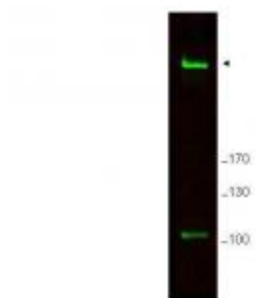
Rif1 Rabbit Polyclonal Antibody

Product data:

Product Type:	Primary Antibodies
Applications:	WB
Recommended Dilution:	ELISA: 1:5,000 - 1:40,000, WB: 1:500 - 1:3,000
Reactivity:	Mouse
Host:	Rabbit
Isotype:	IgG
Clonality:	Polyclonal
Immunogen:	This affinity purified antibody was prepared from whole rabbit serum produced by repeated immunizations with a synthetic peptide corresponding amino acids 2406-2419 of Mouse Rif1.
Formulation:	0.02 M Potassium Phosphate, 0.15 M Sodium Chloride, pH 7.2
Concentration:	lot specific
Conjugation:	Unconjugated
Storage:	Store at -20°C as received.
Stability:	Stable for 12 months from date of receipt.
Gene Name:	replication timing regulatory factor 1
Database Link:	NP_780447 Entrez Gene 51869 Mouse Q6PR54
Synonyms:	DKFZp434D1026; DKFZp781N1478; FLJ10599; FLJ12870; OTTHUMP00000162712
Note:	Rif1 (also known as telomere-associated protein RIF1 and Rap1-interacting factor 1) is a mouse ortholog of the yeast Rif1 family of telomere-associated proteins identified on the basis of its high expression in primordial germ cells and embryo-derived pluripotent stem cell lines. Mouse Rif1 is a protein involved in negative regulation of telomere length. It is also localized to ATM dependent DNA damage foci and may act at the chromatin level to allow access to some factors.



[View online »](#)

Product images:

WB using Anti-Rif1 antibody shows detection of a band ~265 kDa corresponding to mouse Rif1 (arrowhead). Specific reactivity with this band is blocked when the antibody is pre-incubated with the immunizing peptide (data not shown). The primary antibody diluted to 1.0ug/ml. IRDye™800 conjugated Gt-a-Rabbit IgG [H&L] MX was used at 1:10000.