

## Product datasheet for **TA319522**

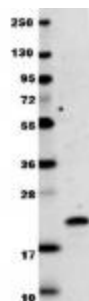
### IL29 (IFNL1) Rabbit Polyclonal Antibody

#### Product data:

Product Type:	Primary Antibodies
Applications:	WB
Recommended Dilution:	ELISA: 1:10,000, WB: 1:1000
Reactivity:	Human
Host:	Rabbit
Isotype:	IgG
Clonality:	Polyclonal
Immunogen:	This IgG fraction antibody was prepared from rabbit antiserum after repeated immunizations with mature length recombinant human IL-29 protein produced in E.coli.
Formulation:	0.02 M Potassium Phosphate, 0.15 M Sodium Chloride, pH 7.2
Concentration:	lot specific
Conjugation:	Unconjugated
Storage:	Store at -20°C as received.
Stability:	Stable for 12 months from date of receipt.
Gene Name:	interferon, lambda 1
Database Link:	<a href="#">NP_742152</a> <a href="#">Entrez Gene 282618 Human</a> <a href="#">Q8IU54</a>
Synonyms:	IL-29; IL29
Note:	IL-29 (Interleukin-29) is a secreted cytokine with immunomodulatory activity. It may play a role in antiviral immunity. It up-regulates MHC class I antigen expression. IL-29 is a ligand for the heterodimeric class II cytokine receptor composed of IL10RB and IL28RA. The ligand/receptor complex seems to signal through the Jak-STAT pathway. Its induction is by viral infections or double stranded RNA. Anti-IL-29 antibody is ideal for investigators involved in Immunology research.
Protein Families:	Druggable Genome, Secreted Protein, Transmembrane
Protein Pathways:	Cytokine-cytokine receptor interaction, Jak-STAT signaling pathway



[View online »](#)

**Product images:**

Anti-human IL-29 antibody in WB shows detection of recombinant human IL-29 raised in E.coli. Recombinant protein (0.1 ug, 19.9 kDa) was loaded onto and resolved by SDS-PAGE, then transferred to nitrocellulose. The membrane was incubated with Rockland's, Inc. Anti-Human IL-29. After washing, membrane was probed with secondary antibody Dylight™ 649 Conjugated Anti-Rabbit IgG (H&L) (Goat) Antibody (611-143-122) diluted 1:20,000.