

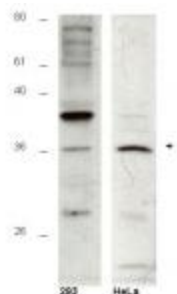
Product datasheet for **TA319520**

HUS1B Rabbit Polyclonal Antibody

Product data:

Product Type:	Primary Antibodies
Applications:	WB
Recommended Dilution:	ELISA: 1:20,000 - 1:100,000, WB: 1:500 - 1:5,000, IP: 1:100
Reactivity:	Human, Mouse, Rat
Host:	Rabbit
Isotype:	IgG
Clonality:	Polyclonal
Immunogen:	This affinity purified antibody was prepared from whole rabbit serum produced by repeated immunizations with a synthetic peptide corresponding to amino acids 104-117 of human Hus1B protein.
Formulation:	0.02 M Potassium Phosphate, 0.15 M Sodium Chloride, pH 7.2
Concentration:	lot specific
Conjugation:	Unconjugated
Storage:	Store at -20°C as received.
Stability:	Stable for 12 months from date of receipt.
Gene Name:	HUS1 checkpoint clamp component B
Database Link:	NP_683762 Entrez Gene 210554 Mouse Entrez Gene 691382 Rat Entrez Gene 135458 Human Q8NHY5
Synonyms:	RP11-532F6.1
Note:	The protein encoded by the Hus1B gene is most closely related to HUS1, a component of a cell cycle checkpoint protein complex involved in cell cycle arrest in response to DNA damage. This protein can interact with the checkpoint protein RAD1 but not with RAD9. Over expression of this protein has been shown to induce cell death, which suggests a related but distinct role of this protein, as compared to HUS1. Hus1B is expressed strongly in testis, less in spleen, thymus, prostate, colon and leukocytes.


[View online »](#)

Product images:

Western blot using affinity purified anti-Hus1B antibody shows detection of a 36kDa band corresponding to Hus1B in a HeLa cell lysate (arrowhead). The staining pattern in 293 cells is less clear, showing a predominant band at 39 kDa. Personal Communication, A-Lien Lu-Chang, U. Maryland, Baltimore, MD