

## Product datasheet for **TA319519**

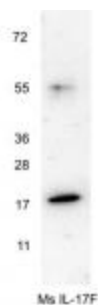
### IL17f Rabbit Polyclonal Antibody

#### Product data:

Product Type:	Primary Antibodies
Applications:	WB
Recommended Dilution:	ELISA: 1:10,000, WB: 1:1,000
Reactivity:	Mouse, Rat
Host:	Rabbit
Isotype:	IgG
Clonality:	Polyclonal
Immunogen:	This purified antibody was prepared from whole rabbit serum produced by repeated immunizations with full length recombinant mouse IL17-F protein.
Formulation:	0.02 M Potassium Phosphate, 0.15 M Sodium Chloride, pH 7.2
Concentration:	lot specific
Conjugation:	Unconjugated
Storage:	Store at -20°C as received.
Stability:	Stable for 12 months from date of receipt.
Gene Name:	interleukin 17F
Database Link:	<a href="#">NP_665855</a> <a href="#">Entrez Gene 301291 Rat</a> <a href="#">Entrez Gene 257630 Mouse</a> <a href="#">Q7TNI7</a>
Synonyms:	IL-17F; IL-24; IL24; Interleukin-24; ML-1; ML1
Note:	IL17-F (also known as ML1, ML-1, IL17F, and IL24) is a cytokine that shares sequence similarity with IL17. This cytokine is expressed by activated T cells, and has been shown to stimulate the production of several other cytokines, including IL6, IL8, and CSF2/GM-CSF. This cytokine is also found to inhibit the angio-genesis of endothelial cells and induce endothelial cells to produce IL2, TGFB1/ GFB, and monocyte chemoattractant protein-1. IL-17F plays a role in the induction of neutrophilia in the lungs and in the exacerbation of antigen-induced pulmonary allergic inflammation. Anti-IL-17F antibody is ideal for investigators involved in Cardiovascular and Immunology research.



[View online »](#)

**Product images:**

WB using anti-Mouse IL-17F antibody shows detection of a band ~18 kDa corresponding to recombinant mouse IL-17F. Primary antibody was used at 1:1,000 dilution.