

## Product datasheet for **TA319516**

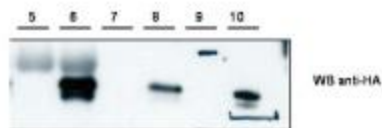
### Cytip Rabbit Polyclonal Antibody

#### Product data:

Product Type:	Primary Antibodies
Applications:	WB
Recommended Dilution:	ELISA: 1:5,000 - 1:20,000, WB: 1:1,000 - 1:10,000, IP: 1:100
Reactivity:	Mouse, Rat, Human
Host:	Rabbit
Isotype:	IgG
Clonality:	Polyclonal
Immunogen:	PSCDBP antibody was prepared from whole rabbit serum produced by repeated immunizations with a synthetic peptide corresponding to a region in the C-terminal portion of mouse Cybr.
Formulation:	0.02 M Potassium Phosphate, 0.15 M Sodium Chloride, pH 7.2
Conjugation:	Unconjugated
Storage:	Store at -20°C as received.
Stability:	Stable for 12 months from date of receipt.
Gene Name:	cytohesin 1 interacting protein
Database Link:	<a href="#">NP_631939</a> <a href="#">Entrez Gene 9595 Human</a> <a href="#">Entrez Gene 311047 Rat</a> <a href="#">Entrez Gene 227929 Mouse</a> <a href="#">Q91VY6</a>
Synonyms:	B3-1; CASP; CYBR; CYTHIP; HE; PSCDBP
Note:	This antibody is suitable for Cancer, Immunology and Nuclear Signaling research. Cybr (Pscdbp) is a new scaffold protein with significant homology to Tamalin. It contains a PDZ binding domain and a coiled-coil domain. Cybr is highly expressed in the immune system, and its expression seems to be common to nearly all immune cell populations (T cells, B cells, NK Macrophages, dendritic cells). Other organs/tissues in which Cybr is expressed include lung, kidney, intestine and testes. Cybr may play an important in vivo role in cell migration, especially when modulated by pro-inflammatory cytokines. Research Area is Chromatin, Immunology, Neuroscience, Signal Transduction



[View online »](#)

**Product images:**

Western blot using anti-Cybr antibody shows detection of recombinant Cybr using anti-HA tag antibody after immunoprecipitation using anti-Cybr. Lane 5 contains lysate from control HEK293 cells. Lane 6 shows IP/WB of HEK293 cells expressing Cybr-HA. Lane 7 and 8 are loaded similarly to lanes 5 and 6 but were immunoprecipitated with anti-HA. Lane 9 contains marker. Lane 10 contains purified CybrHA. Personal Communication, V. Coppola, NCI, Bethesda, MD.