

Product datasheet for **TA319515**

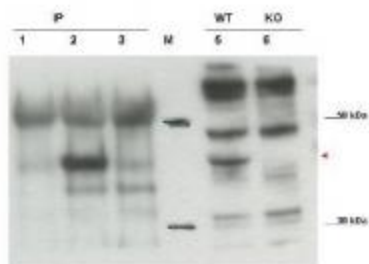
Cytip Rabbit Polyclonal Antibody

Product data:

Product Type:	Primary Antibodies
Applications:	WB
Recommended Dilution:	ELISA: 1:5,000 - 1:20,000, WB: 1:1,000
Reactivity:	Mouse, Rat
Host:	Rabbit
Isotype:	IgG
Clonality:	Polyclonal
Immunogen:	This antibody was prepared from whole rabbit serum produced by repeated immunizations with a synthetic peptide corresponding to a region in the carboxy terminal portion of mouse Cybr.
Formulation:	0.02 M Potassium Phosphate, 0.15 M Sodium Chloride, pH 7.2
Concentration:	lot specific
Conjugation:	Unconjugated
Storage:	Store at -20°C as received.
Stability:	Stable for 12 months from date of receipt.
Gene Name:	cytohesin 1 interacting protein
Database Link:	NP_631939 Entrez Gene 311047 Rat Entrez Gene 227929 Mouse Q91VY6
Synonyms:	B3-1; CASP; CYBR; CYTHIP; HE; PSCDBP
Note:	This antibody is suitable for Cancer, Immunology and Nuclear Signaling research. Cybr (Pscdbp) is a new scaffold protein with significant homology to Tamalin. It contains a PDZ binding domain and a coiled-coil domain. Cybr is highly expressed in the immune system, and its expression seems to be common to nearly all immune cell populations (T cells, B cells, NK Macrophages, dendritic cells). Other organs/tissues in which Cybr is expressed include lung, kidney, intestine and testes. Cybr may play an important in vivo role in cell migration, especially when modulated by pro-inflammatory cytokines.



[View online »](#)

Product images:

WB using Anti-Cybr antibody shows detection of endogenous Cybr from mouse splenocytes using anti-Cybr antibody to immunoprecipitate and WB (lanes 1-3). Lane 1 shows reactivity of pre-immune sera. Lane 2 shows endogenous Cybr detected with antibody. Lane 3 shows no band detected in lysates prepared from splenocytes of Cybr knock-out mouse. Lane 5 shows direct WB of wt splenocytes. Lane 6 shows direct WB of knock out mouse. Personal Communication, V. Coppola, NCI, Bethesda, MD.