

Product datasheet for **TA319514**

RAD52 Rabbit Polyclonal Antibody

Product data:

Product Type:	Primary Antibodies
Applications:	WB
Recommended Dilution:	ELISA: 1:5,000 - 1:20,000, WB: 1:500 - 1:2,000
Reactivity:	Human
Host:	Rabbit
Isotype:	IgG
Clonality:	Polyclonal
Immunogen:	This affinity purified antibody was prepared from whole rabbit serum produced by repeated immunizations with a synthetic peptide corresponding to aa 360 - 375 of the Human Rad 52 protein.
Formulation:	0.02 M Potassium Phosphate, 0.15 M Sodium Chloride, pH 7.2
Concentration:	lot specific
Conjugation:	Unconjugated
Storage:	Store at -20°C as received.
Stability:	Stable for 12 months from date of receipt.
Gene Name:	RAD52 homolog, DNA repair protein
Database Link:	NP_602296 Entrez Gene 5893 Human P43351
Synonyms:	RP11-359B12.2



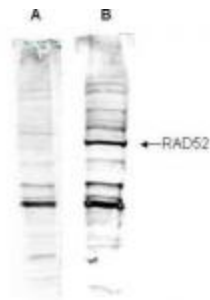
[View online »](#)

Note: The protein encoded by this gene shares similarity with *Saccharomyces cerevisiae* Rad52, a protein important for DNA double-strand break repair and homologous recombination. This gene product was shown to bind single-stranded DNA ends, and mediate the DNA-DNA interaction necessary for the annealing of complementary DNA strands. It was also found to interact with DNA recombination protein RAD51, which suggested its role in RAD51 related DNA recombination and repair. Four alternatively spliced transcript variants encoding different isoforms have been reported for this gene. The alpha variant encodes the longest isoform that contains an identical N-terminus, but a distinct C-terminus, as compared to other isoforms (beta, delta, and gamma).

Protein Families: Druggable Genome

Protein Pathways: Homologous recombination

Product images:



WB analysis using Anti-Human RAD52 antibody to detect Human RAD52 present in a HeLa nuclear extract (panel B). ~30ug of lysate was loaded per lane for 4-20% gradient SDS-PAGE. Peptide competition (panel A) blocks the specific staining of this band. The blot was incubated with a 1:1000 dilution of the antibody followed by detection using IRDye™800 labeled Goat-a-Rabbit IgG [H&L] diluted 1:5,000.