

Product datasheet for **TA319512**

UBE2J2 Rabbit Polyclonal Antibody

Product data:

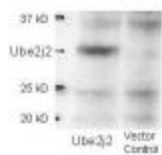
Product Type:	Primary Antibodies
Applications:	WB
Recommended Dilution:	ELISA: 1:5,000 - 1:25,000, WB: 1:500 - 1:3,000
Reactivity:	Human, Mouse, Rat
Host:	Rabbit
Isotype:	IgG
Clonality:	Polyclonal
Immunogen:	This affinity purified antibody was prepared from whole rabbit serum produced by repeated immunizations with a synthetic peptide corresponding to an internal region of the human Ube2j2 protein.
Formulation:	0.02 M Potassium Phosphate, 0.15 M Sodium Chloride, pH 7.2
Concentration:	lot specific
Conjugation:	Unconjugated
Storage:	Store at -20°C as received.
Stability:	Stable for 12 months from date of receipt.
Gene Name:	ubiquitin conjugating enzyme E2 J2
Database Link:	NP_477515 Entrez Gene 140499 Mouse Entrez Gene 298689 Rat Entrez Gene 118424 Human Q8N2K1
Synonyms:	NCUBE-2; NCUBE2; PRO2121
Note:	This antibody is suitable for Cancer, Immunology and Nuclear Signaling research. Ube2j2 and Ube2j1 are homologs of the yeast ubiquitin-conjugating enzyme UBC6, which catalyzes the covalent attachment of ubiquitin to other proteins. These proteins constitute a distinct family of ubiquitin-conjugating enzymes sharing a conserved non-canonical active site sequence and a C-terminal trans-membrane domain. By analogy with yeast UBC6, Ube2j1 and Ube2j2 are localized to the endoplasmic reticulum and seem to function in the selective degradation of misfolded membrane proteins and in general mediation of the stress response.
Protein Families:	Transmembrane



[View online »](#)

Protein Pathways: Parkinson's disease, Ubiquitin mediated proteolysis

Product images:



Western blot using affinity purified anti-Ube2j2 antibody shows detection of Ube2j2 in 293 cells over-expressing Myc-Ube2j2 (Lane 1). Lane 2 contains lysate from mock-transfected 293 cells. Personal Communication, A. Weissman & T. Shang, CCR-NCI, Frederick, MD