

Product datasheet for **TA319510**

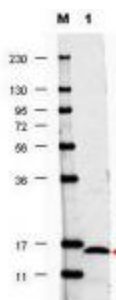
IL17F Rabbit Polyclonal Antibody

Product data:

Product Type:	Primary Antibodies
Applications:	WB
Recommended Dilution:	ELISA: 1:1,000 - 1:5,000, WB: 1:500 - 1:2,000
Reactivity:	Human
Host:	Rabbit
Isotype:	IgG
Clonality:	Polyclonal
Immunogen:	This purified antibody was prepared from whole rabbit serum produced by repeated immunizations with full length recombinant human IL17-F protein.
Formulation:	0.02 M Potassium Phosphate, 0.15 M Sodium Chloride, pH 7.2
Concentration:	lot specific
Conjugation:	Unconjugated
Storage:	Store at -20°C as received.
Stability:	Stable for 12 months from date of receipt.
Gene Name:	interleukin 17F
Database Link:	NP_443104 Entrez Gene 112744 Human Q96PD4
Synonyms:	CANDF6; IL-17F; ML-1; ML1
Note:	IL17-F (also known as ML1, ML-1, IL17F, and IL24) is a cytokine that shares sequence similarity with IL17. This cytokine is expressed by activated T cells, and has been shown to stimulate the production of several other cytokines, including IL6, IL8, and CSF2/GM-CSF. This cytokine is also found to inhibit the angio-genesis of endothelial cells and induce endothelial cells to produce IL2, TGFB1/ GFB, and monocyte chemoattractant protein-1. Interleukin 1 receptor antagonist is secreted by various types of cells including immune, epithelial and adipocytes. Anti-IL-17F antibody is ideal for investigators involved in Cancer, Cardiovascular and Immunology research.
Protein Families:	Druggable Genome, Secreted Protein



[View online »](#)

Product images:

WB using anti-Human IL17-F antibody shows detection of a band ~15 kDa in size corresponding to recombinant human IL17-F (lane 1). Molecular weight markers are also shown (M). After transfer, the membrane was blocked overnight with 3% BSA in TBS followed by reaction with primary antibody at a 1:1,000 dilution. Detection occurred using DyLight 649 conjugated anti-Rabbit IgG (p/n 611-143-122) secondary antibody diluted 1:20,000 in blocking buffer (p/n MB-070).