

## Product datasheet for **TA319506**

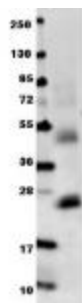
### IL6 Rabbit Polyclonal Antibody

#### Product data:

Product Type:	Primary Antibodies
Applications:	WB
Recommended Dilution:	ELISA: 1:10,000, WB: 1:1000, IHC: User Optimized
Reactivity:	Mouse
Host:	Rabbit
Isotype:	IgG
Clonality:	Polyclonal
Immunogen:	Anti-IL-6 is an IgG fraction antibody prepared from rabbit antiserum after repeated immunizations with recombinant mouse IL-6 protein produced in E.coli.
Formulation:	0.02 M Potassium Phosphate, 0.15 M Sodium Chloride, pH 7.2
Concentration:	lot specific
Conjugation:	Unconjugated
Storage:	Store at -20°C as received.
Stability:	Stable for 12 months from date of receipt.
Gene Name:	interleukin 6
Database Link:	<a href="#">NP_112445</a> <a href="#">Entrez Gene 16193 Mouse</a> <a href="#">P08505</a>
Synonyms:	BSF-2; BSF2; CDF; HGF; HSF; IFNB2; IL-6; OTTHUMP00000158544
Note:	Interleukin (IL)-6, also know as BCDG, BCGF and BSF-2, is an important proinflammatory and immunoregulatory cytokine expressed by various cells. Interleukin-6 has been shown to inhibit the growth of early stage and to promote the proliferation of advanced stage melanoma cells in vitro. Anti-IL-6 antibody is ideal for investigators involved in Cancer, Neuroscience and Immunology research.



[View online »](#)

**Product images:**

Anti-mouse IL-6 antibody in WB shows detection of recombinant mouse IL-6 raised in E.coli. Recombinant truncated protein (0.1 ug, 21.7 kDa) was loaded on to an SDS-PAGE gel, and after separation, transferred to nitrocellulose. The membrane was incubated with Anti-Mouse IL-6 antibody diluted 1:1,000 in 1% BSA in TBST overnight at 4°C. After washes, the blot was reacted with secondary antibody Dylight™ 649 Conjugated Anti-Rabbit IgG (H&L) (Goat) Antibody diluted 1:20,000.