

Product datasheet for **TA319497**

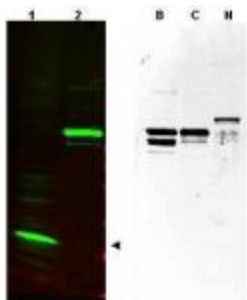
SPANX (SPANXC) Rabbit Polyclonal Antibody

Product data:

Product Type:	Primary Antibodies
Applications:	WB
Recommended Dilution:	ELISA: 1:10,000 - 1:50,000, WB: 1:500 - 1:3,000
Reactivity:	Human
Host:	Rabbit
Isotype:	IgG
Clonality:	Polyclonal
Immunogen:	This affinity purified antibody was prepared from whole rabbit serum produced by repeated immunizations with a synthetic peptide corresponding to amino acids 31-47 of human SPANX-C protein.
Formulation:	0.02 M Potassium Phosphate, 0.15 M Sodium Chloride, pH 7.2
Concentration:	lot specific
Conjugation:	Unconjugated
Storage:	Store at -20°C as received.
Stability:	Stable for 12 months from date of receipt.
Gene Name:	SPANX family member C
Database Link:	NP_073152 Entrez Gene 64663 Human Q9NY87
Synonyms:	C; CT11.3; CTp11; SPANX-C
Note:	This antibody is suitable for Cancer, Immunology and Nuclear Signaling research. Human Sperm Proteins Associated with the Nucleus on X-chromosome (SPANX) are relatively low molecular weight cytoplasmic proteins found in testis and sperm. Their expression in other tissues indicates malignancies. Family members are observed as proteins that range from 15 to 20 kDa.



[View online »](#)

Product images:

WB using Anti-SPANX (pan) antibody shows detection of a band at ~17 kDa corresponding to SPANX-C present in a nuclear extract from VWM105 cells (left panel, arrowhead). VWM105 cells are derived from a human melanoma and are positive for SPANX proteins. Lane 2 shows reactivity with a purified recombinant SPANX-C fusion protein. The right panel shows similar reactivity with purified recombinant SPANX-B, SPANX-C and SPANX-N proteins. The primary antibody was diluted to 1:1,000.