

Product datasheet for **TA319495**

RNF25 Rabbit Polyclonal Antibody

Product data:

Product Type:	Primary Antibodies
Applications:	IP, WB
Recommended Dilution:	ELISA: 1:10,000 - 1:40,000, WB: 1:200 - 1:2,000, IP: 1 mg
Reactivity:	Human, Mouse
Host:	Rabbit
Isotype:	IgG
Clonality:	Polyclonal
Immunogen:	This affinity purified antibody was prepared from whole rabbit serum produced by repeated immunizations with a synthetic peptide corresponding to amino acids near the carboxyl terminus of human RNF25 protein.
Formulation:	0.02 M Potassium Phosphate, 0.15 M Sodium Chloride, pH 7.2
Concentration:	lot specific
Conjugation:	Unconjugated
Storage:	Store at -20°C as received.
Stability:	Stable for 12 months from date of receipt.
Gene Name:	ring finger protein 25
Database Link:	NP_071898 Entrez Gene 57751 Mouse Entrez Gene 64320 Human Q96BH1
Synonyms:	AO7

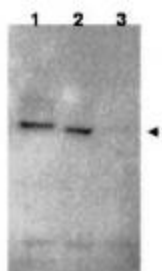


[View online »](#)

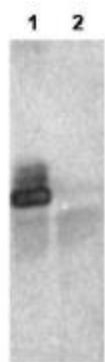
Note: This antibody is suitable for Cancer, Immunology and Nuclear Signaling research. RING finger protein 25 (RNF25, also named AO7) contains a RING finger domain and is ubiquitously expressed in various tissues. RNF25 was initially identified in a yeast two-hybrid screen of a murine T-cell library by using Ubch5b, an E2 enzyme, as bait. RNF25 has also been shown to act as a putative E3 ligase, at least in vitro. RNF25 localizes predominantly in the nucleus and supports the transcriptional activity of NF- κ B by interacting with p65 in vivo upon stimulation with TNF. Yeast two-hybrid data also suggest that RNF25 interacts with a number of other molecules which may be potential ubiquitin ligase substrates. Among these are molecules that have critical roles in signal transduction and in regulation of translation (personal communication, Allan Weissman, CCR-NCI, Bethesda, MD).

Protein Families: Druggable Genome

Product images:



Western blot using affinity purified anti-RNF25 antibody shows detection of RNF25 (arrow head) in HEK293 cells over-expressing human RNF25 (lane 1) or mouse RNF25 (lane 2). Lane 1 is a vector only control. The extracts were loaded onto a gel, followed by electrophoresis and transfer to nitrocellulose. The membrane was probed with the primary antibody diluted to 1:1,000. Personal Communication, Allan Weissman, CCR-NCI, Bethesda, MD.



1 ug of Rockland's affinity purified anti-RNF25 was used in immunoprecipitation of 20 ug HEK293 cell lysate over-expressing HA-tagged human RNF25 (lane 1) or vector only control (lane 2). The precipitated complex was loaded onto a gel, followed by electrophoresis and transfer to nitrocellulose. The membrane was probed with anti-HA tag antibody. Personal Communication, Allan Weissman, CCR-NCI, Bethesda, MD.