

Product datasheet for **TA319494**

TMBIM1 Rabbit Polyclonal Antibody

Product data:

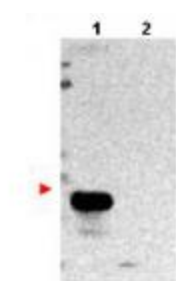
Product Type:	Primary Antibodies
Applications:	WB
Recommended Dilution:	ELISA: 1:10,000, WB: 1:500 – 1:2,000
Reactivity:	Human
Host:	Rabbit
Isotype:	IgG
Clonality:	Polyclonal
Immunogen:	This protein A purified antibody was prepared from whole rabbit serum produced by repeated immunizations with a recombinant protein corresponding to the amino terminus of human TMBIM1 protein.
Formulation:	0.02 M Potassium Phosphate, 0.15 M Sodium Chloride, pH 7.2
Concentration:	lot specific
Conjugation:	Unconjugated
Storage:	Store at -20°C as received.
Stability:	Stable for 12 months from date of receipt.
Gene Name:	transmembrane BAX inhibitor motif containing 1
Database Link:	NP_071435 Entrez Gene 64114 Human Q969X1
Synonyms:	LFG3; MST100; MSTP100; PP1201; RECS1



Note: This antibody is suitable for Cancer, Immunology and Nuclear Signaling research. TM BIM1 (Transmembrane BAX inhibitor motif-containing protein 1) is a member of the 7 TMS (7 transmembrane domains) family of receptors known to mediate the activation of various transcription factors. TM BIM1 is identified as a novel modulator of NF- κ B activation. A drosophila homolog of this protein (dNMDA1 with 40% homology to hTM BIM1) is reported to be unregulated during aging and oxidative stress.

Protein Families: Transmembrane

Product images:



WB using anti-TM BIM1 antibody shows detection of exogenous TM BIM1 in lysates from HeLa cells transfected with pcDNA3-hTM BIM1 (lane 1). No staining is observed in lysates from mock transformed HeLa cells (lane 2). To date this antibody has shown the ability to recognize overexpressed TM BIM1 but not endogenous protein. The membrane was probed with the primary antibody at a 1:1,000 dilution at 4°C, overnight. Personal Communication from Srinivasa Srinivasula, CCR-NCI, Bethesda, MD.