

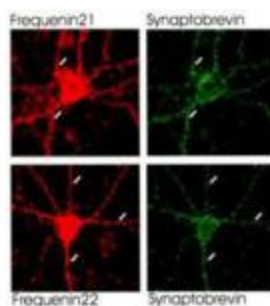
Product datasheet for TA319491

Ncs1 Rabbit Polyclonal Antibody

Product data:

Product Type:	Primary Antibodies
Applications:	IF
Recommended Dilution:	ELISA: 1:10,000 - 1:50,000, WB: 1:500- 1:2,000, IF: 1:100-1:2500
Reactivity:	Human, Mouse, Rat
Host:	Rabbit
Isotype:	IgG
Clonality:	Polyclonal
Immunogen:	Frequenin (recombinant from Mouse with extensive post-translational modifications)
Formulation:	0.02 M Potassium Phosphate, 0.15 M Sodium Chloride, pH 7.2
Concentration:	lot specific
Conjugation:	Unconjugated
Storage:	Store at -20°C as received.
Stability:	Stable for 12 months from date of receipt.
Gene Name:	neuronal calcium sensor 1
Database Link:	NP_062655 Entrez Gene 23413 Human Entrez Gene 65153 Rat Entrez Gene 14299 Mouse Q8BNY6
Synonyms:	FLUP; FREQ

Product images:



Hippocampal neurons were prepared from 17 d old NMRI mice and grown as described previously (G. Grosse et al., (2000) J. Neurosci. 20: 1869-1882). The figure shows the distribution of neuronal calcium sensor-1 (NCS-1) (red) and synaptobrevin (green) in hippocampal cell cultures after 19 d in vitro. Numerous synapses immunoreactive for synaptobrevin also show NCS-1 immunoreactivity. NCS-1 derived from invertebrate homologs has been referred to as frequenin.



[View online »](#)