

Product datasheet for **TA319489**

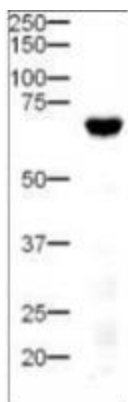
DLL4 Rabbit Polyclonal Antibody

Product data:

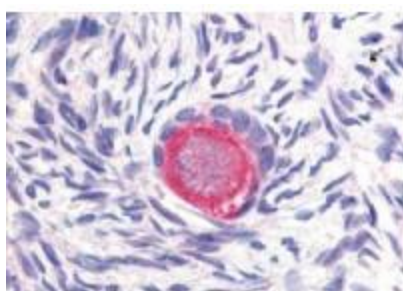
Product Type:	Primary Antibodies
Applications:	IHC, WB
Recommended Dilution:	ELISA: 1:5,000 - 1:25,000, WB: 1:500 - 1:2,500, IHC: 10 ug/mL to 20 ug/mL
Reactivity:	Human, Mouse, Rat
Host:	Rabbit
Isotype:	IgG
Clonality:	Polyclonal
Immunogen:	Anti-DELTA-4 antibody was prepared from whole rabbit serum produced by repeated immunizations with a synthetic peptide corresponding to an internal region of Human DELTA-4.
Formulation:	0.02 M Potassium Phosphate, 0.15 M Sodium Chloride, pH 7.2
Conjugation:	Unconjugated
Storage:	Store at -20°C as received.
Stability:	Stable for 12 months from date of receipt.
Gene Name:	delta like canonical Notch ligand 4
Database Link:	NP_061947 Entrez Gene 54485 Mouse Entrez Gene 311332 Rat Entrez Gene 54567 Human Q9NR61
Synonyms:	hdelta2
Note:	DELTA-4 (also called delta 4 precursor, delta ligand 4 precursor, Delta-like protein 4, DLL4, Drosophila Delta homolog 4 and notch ligand DLL4 precursor) is a homolog of the Drosophila delta protein. The delta gene family encodes Notch ligands that are characterized by a DSL domain, EGF repeats, and a transmembrane domain. DELTA-4 plays a role in the Notch signaling pathway and activates Notch-1 and Notch-4. DELTA-4 is a membrane protein that is expressed in the vascular endothelium.
Protein Families:	Cancer stem cells, Druggable Genome, ES Cell Differentiation/IPS, Stem cell relevant signaling - DSL/Notch pathway, Transmembrane
Protein Pathways:	Notch signaling pathway


[View online »](#)

Product images:



Western Blot of Rabbit anti-Delta-4 antibody. Lane 1: mouse pancreatic tissue. Load: 20 ug per lane. Primary antibody: Delta-4 antibody at 1:500 for overnight at 4°C. Secondary antibody: HRP-labeled Goat anti-Rabbit IgG secondary antibody at 1:5,000 for 1 hour at RT. A chemiluminescence system was used for signal detection using a 3 min exposure time. Block: 5% Goat Serum overnight at 4°C. Predicted/Observed size: 74 kDa, 70 kDa for Delta 4. Other band (s): none.



Affinity Purified anti-Delta-4 antibody was used at 20 ug/ml to detect Delta-4 in a variety of tissues including colon, liver, skeletal muscle, ovary, pancreas, prostate, testes, thymus, tonsil and uterus. In contrast to reported findings, no staining was observed in vascular tissue. This image shows Delta-4 staining of human ovary. Tissue was formalin-fixed and paraffin embedded. Personal Communication, Tina Roush, LifeSpanBiosciences, Seattle, WA.