

Product datasheet for **TA319486**

UBP43 (USP18) Rabbit Polyclonal Antibody

Product data:

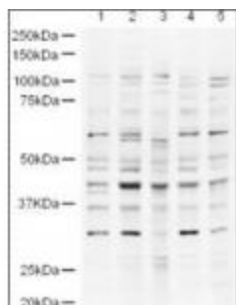
Product Type:	Primary Antibodies
Applications:	WB
Recommended Dilution:	ELISA: 1:10,000 - 1:50,000, WB: 1:500 - 1:2,000, IF: User Optimized
Reactivity:	Human
Host:	Rabbit
Isotype:	IgG
Clonality:	Polyclonal
Immunogen:	This affinity purified antibody was prepared from whole rabbit serum produced by repeated immunizations with a synthetic peptide corresponding aa 40-49 of human UBP43 protein.
Formulation:	0.02 M Potassium Phosphate, 0.15 M Sodium Chloride, pH 7.2
Concentration:	lot specific
Conjugation:	Unconjugated
Storage:	Store at -20°C as received.
Stability:	Stable for 12 months from date of receipt.
Gene Name:	ubiquitin specific peptidase 18
Database Link:	NP_059110 Entrez Gene 11274 Human Q9UMW8
Synonyms:	ISG43; UBP43
Note:	UBP43 (also known as ISG43, Ubl thiolesterase 18, ISG15-specific processing protease, 43 kDa ISG15-specific protease, ubiquitin specific protease 18 or USP18) is a member of the deubiquitinating protease family of enzymes, which removes ubiquitin adducts from a broad range of protein substrates. Deletion of the UBP43 gene in mouse leads to a massive increase of ISG15 conjugates in tissues indicating that UBP43 is a major ISG15-specific protease. UBP43 is the first ISG15-specific protease reported. Both ISG15 and UBP43 genes are known to be strongly induced by interferon, genotoxic stress, and viral infection. Thus UBP43 may be necessary to maintain a critical cellular balance of ISG15-conjugated proteins in both healthy and stressed organisms.



[View online »](#)

Protein Families: Druggable Genome, Protease

Product images:



WB using Anti-UBP43 antibody shows detection of a band ~43 kDa band (arrowhead) in lysates from HeLa nuclear extracts (lane 1) and whole cell lysates from HeLa (lane 2), A431 (lane 3, Jurkat (Lane 4) and HEK293 (lane 5).

Approximately 18 ug of each lysate was run on a SDS-PAGE and transferred onto nitrocellulose followed by reaction with a 1:500 dilution of anti-UBP43 antibody. The strong band between the 37kD and 50kD markers is expected to be UBP43.