

Product datasheet for **TA319468**

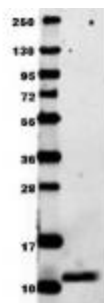
Ccl3 Rabbit Polyclonal Antibody

Product data:

Product Type:	Primary Antibodies
Applications:	WB
Recommended Dilution:	ELISA: 1:10,000, WB: 1:1000
Reactivity:	Mouse
Host:	Rabbit
Isotype:	IgG
Clonality:	Polyclonal
Immunogen:	This IgG fraction antibody was prepared from rabbit antiserum after repeated immunizations with recombinant truncated mouse MIP-1a protein produced in E.coli.
Formulation:	0.02 M Potassium Phosphate, 0.15 M Sodium Chloride, pH 7.2
Concentration:	lot specific
Conjugation:	Unconjugated
Storage:	Store at -20°C as received.
Stability:	Stable for 12 months from date of receipt.
Gene Name:	chemokine (C-C motif) ligand 3
Database Link:	NP_035467 Entrez Gene 20302 Mouse P10855
Synonyms:	G0S19-1; LD78ALPHA; MIP-1-alpha; MIP1A; SCYA3; SIS-beta
Note:	Mouse MIP-1a, or Ccl3, of the intercrine beta (chemokine CC family) is a secreted cytokine with inflammatory, pyrogenic and chemokinetic properties. It is expressed in lung, spleen, and pancreas, and has a potent chemotactic activity for eosinophils. Ccl3 binding to a high-affinity receptor activates calcium release in neutrophils.



[View online »](#)

Product images:

Anti-mouse MIP-1a in WB shows detection of recombinant mouse MIP-1a/Ccl3 raised in E.coli. Recombinant truncated (0.1 ug, 7.8 kDa) protein was loaded onto and resolved by SDS-PAGE, then transferred to nitrocellulose. The membrane was incubated with Rockland's, Inc. Anti-Mouse MIP-1a/Ccl3. After washing, membrane was probed with secondary antibody Dylight™ 649 Conjugated Anti-Rabbit IgG (H&L) (Goat) Antibody (611-143-122) diluted 1:20,000 in blocking buffer (p/n MB-070) for 30 min.