

## Product datasheet for **TA319466**

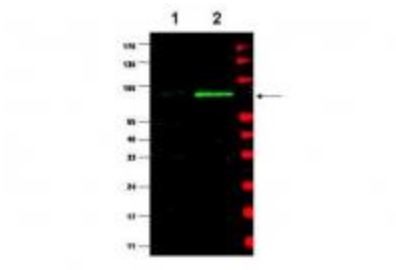
### Mdm2 Rabbit Polyclonal Antibody

#### Product data:

|                       |   |
|-----------------------|---|
| Product Type:         | Primary Antibodies  |
| Applications:         | WB  |
| Recommended Dilution: | ELISA: 1:3,000 - 1:12,000, WB: 1:500 - 1:2,000, IP: 1:100   |
| Reactivity:           | Mouse   |
| Host:                 | Rabbit  |
| Isotype:              | IgG   |
| Clonality:            | Polyclonal  |
| Immunogen:            | This affinity purified antibody was prepared from whole rabbit serum produced by repeated immunizations with a synthetic peptide corresponding to aa 177-195 of mouse MDM2.   |
| Formulation:          | 0.02 M Potassium Phosphate, 0.15 M Sodium Chloride, pH 7.2  |
| Concentration:        | lot specific  |
| Conjugation:          | Unconjugated  |
| Storage:              | Store at -20°C as received.   |
| Stability:            | Stable for 12 months from date of receipt.  |
| Gene Name:            | transformed mouse 3T3 cell double minute 2  |
| Database Link:        | <a href="#">NP_034916</a><br><a href="#">Entrez Gene 17246 Mouse</a><br><a href="#">P23804</a>  |
| Synonyms:             | Hdm2; HDMX; MGC5370; MGC71221; OTTHUMP00000183495   |
| Note:                 | MDM2 is a nuclear phosphoprotein with an apparent molecular mass of 90 kD that forms a complex with the p53 tumor suppressor protein. Human MDM2 was identified as a homologous product of the 'murine double minute 2' gene (mdm2). The MDM2 gene enhances the tumorigenic potential of cells when it is overexpressed and encodes a putative transcription factor. Forming a tight complex with the p53 gene, the MDM2 oncogene can inhibit p53-mediated transactivation. MDM2 binds to p53 and amplification of MDM2 in sarcomas leads to escape from p53-regulated growth control. This mechanism of tumorigenesis parallels that for virus-induced tumors in which viral oncogene products bind to and functionally inactivate p53. Over-expression of the |



[View online »](#)

**Product images:**

WB using Anti-MDM2 (Rabbit) to detect a band (arrow) corresponding to mouse MDM2 protein present in mouse MEF cells (lane 2) but not human kidney HEK293 cells (lane 1). The primary antibody was diluted to 1:500. The membrane was washed and reacted with a 1:10,000 dilution of IRDye800 conjugated Gt-a-Rabbit IgG [H&L] for 45 min at RT.