

Product datasheet for **TA319462**

Alb Rabbit Polyclonal Antibody

Product data:

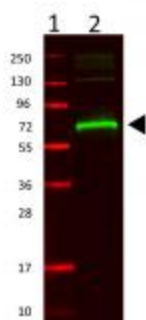
Product Type:	Primary Antibodies
Applications:	WB
Recommended Dilution:	ELISA: 1:20,000 - 1:100,000, WB: 1:2,000 - 1:10,000, IHC: 1:500 - 1:2,500
Reactivity:	Mouse
Host:	Rabbit
Isotype:	IgG
Clonality:	Polyclonal
Immunogen:	Anti-Mouse Serum Albumin Antibody was produced by repeated immunizations with mouse serum albumin.
Formulation:	0.02 M Potassium Phosphate, 0.15 M Sodium Chloride, pH 7.2
Concentration:	lot specific
Conjugation:	Unconjugated
Storage:	Store at -20°C as received.
Stability:	Stable for 12 months from date of receipt.
Gene Name:	albumin
Database Link:	NP_033784 Entrez Gene 11657 Mouse P07724
Synonyms:	albumin; DKFZp779N1935; PRO0883; PRO0903; PRO1341
Note:	Anti-Mouse Serum Albumin antibody detects Serum Albumin. Serum albumin is the main protein of plasma. It has a good binding capacity for water, Ca ²⁺ , Na ⁺ , K ⁺ , fatty acids, hormones, bilirubin and drugs. Its main function is the regulation of the colloidal osmotic pressure of blood. ALB is the major zinc transporter in plasma; it typically binds about 80% of all plasma zinc. BSA antibody is ideal for investigators involved in Cell Signaling, Neuroscience and Signal Transduction research.



[View online »](#)

Product images:


SDS-PAGE of rabbit anti-Mouse Serum Albumin. Lane 1: mouse serum albumin reduced. Lane 2: molecular weight. Lane 3: mouse serum albumin non-reduced. Load: 1.0 ug. Predicted/Observed size: Analysis by SDS-PAGE shows a banding pattern consistent with purified Rabbit IgG. Other band (s): none.



Western Blot of rabbit anti-mouse serum albumin. Lane 1: molecular weight. Lane 2: mouse serum albumin. Load: 0.1 ug. Primary antibody: MSA antibody at 1:1000 in 1% BSA-TTBS for overnight at 4°C. Secondary antibody: IRDye800™ rabbit secondary antibody at 1:20,000 for 45 min at RT. Block: Blocking Buffer for Fluorescent Western Blotting (p/n MB-070) 30 min at 4°C. Predicted/Observed size: 69 kDa, 72 kDa for MSA. Other band (s): none.