

Product datasheet for **TA319461**

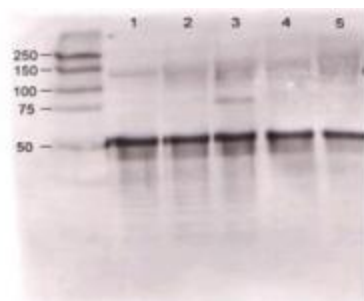
Angpt1 Rabbit Polyclonal Antibody

Product data:

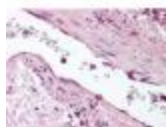
Product Type:	Primary Antibodies
Applications:	IHC, WB
Recommended Dilution:	ELISA: 1:5,000 - 1:25,000, WB: 1:500-1:2,000, IHC: 1:200-1:800
Reactivity:	Human, Mouse
Host:	Rabbit
Isotype:	IgG
Clonality:	Polyclonal
Immunogen:	This whole rabbit serum was prepared by repeated immunizations with a synthetic peptide N-Q-R-R-N-P-E-N-G-G-R-R-Y-N-R-I-Q-H-G-Q corresponding to a region (aa 21-40) near the N-terminus of mouse angiopoietin 1 protein conjugated to KLH using maleimide. A residue of cysteine was added to the amino terminal end to facilitate coupling.
Formulation:	0.02 M Potassium Phosphate, 0.15 M Sodium Chloride, pH 7.2
Conjugation:	Unconjugated
Storage:	Store at -20°C as received.
Stability:	Stable for 12 months from date of receipt.
Gene Name:	angiopoietin 1
Database Link:	NP_033770 Entrez Gene 284 Human Entrez Gene 11600 Mouse O08538
Synonyms:	AGP1; AGPT; ANG-1; ANG1; KIAA0003
Note:	Anti Angiopoietin-1 Antibody recognizes Angiopoietin-1 (Ang-1) that has importance in the development of the endothelium by regulating tyrosine phosphorylation of the membrane receptor Tie-2/Tek. Ang-1 binding to Tie-2/Tek causes phosphorylation of the receptor. Ang-2 competes for this binding, and thus blocks receptor phosphorylation. Ang-1 has a potential fibrinogen-like domain at the carboxyl terminus and coiled-coil regions in the amino terminus. Ang-1 is prominently expressed in the myocardium of atrium and ventricle, mesenchymal and smooth muscle cells surrounding most blood vessels, and lung. In the adult, Ang-1 is also expressed in the heart and liver.



[View online »](#)

Product images:

Rabbit anti-Ang-1 was used at 1:500 to detect mouse Ang-1 by WB against supernatants of mouse angiopoietin-expressing endothelial cells. Lane 1 - wt endothelial cells. Lane 2 - mouse Ang-1 (clone 1-8) expressing cells. Lane 3 - mouse Ang-1 (clone 1-15) expressing cells. Lane 4 - mouse Ang-2 (clone 2-9) expressing cells.



anti-ANG1 antibody was diluted 1:500 to detect ANG1 in human lung tissue. Tissue was formalin fixed and paraffin embedded. No pre-treatment of sample was required. The image shows the localization of antibody as the precipitated red signal, with a hematoxylin purple nuclear counter stain.