

Product datasheet for **TA319459**

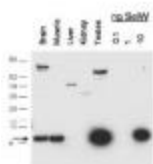
Selenow Rabbit Polyclonal Antibody

Product data:

Product Type:	Primary Antibodies
Applications:	WB
Recommended Dilution:	ELISA: 1:100,000, WB: 1:1,000 - 1:5,000, IP: 1:100
Reactivity:	Mouse
Host:	Rabbit
Isotype:	IgG
Clonality:	Polyclonal
Immunogen:	This affinity purified antibody was prepared from whole rabbit serum produced by repeated immunizations with a recombinant protein corresponding to full-length mouse SelW protein.
Formulation:	0.02 M Potassium Phosphate, 0.15 M Sodium Chloride, pH 7.2
Concentration:	lot specific
Conjugation:	Unconjugated
Storage:	Store at -20°C as received.
Stability:	Stable for 12 months from date of receipt.
Gene Name:	selenoprotein W, muscle 1
Database Link:	NP_033182 Entrez Gene 20364 Mouse P63300
Synonyms:	selW
Note:	This antibody is suitable for Cancer, Immunology and Nuclear Signaling research. Selenoprotein W was first purified and characterized from rat skeletal muscle. The function of selenoprotein W is not entirely clear, but the presence of the bound glutathione moiety indicates that SelW is thought to function in oxidation-reduction catalysis and may play a role in selenium deficiency disorders such as white muscle disease in sheep and Keshan disease in humans. Recently, overexpression of SelW was shown to be glutathione dependent and was shown to markedly reduce the sensitivity of cell lines to H ₂ O ₂ cytotoxicity.



[View online »](#)

Product images:

Western blot using anti-SelW antibody shows detection of endogenous SelW in mouse brain, muscle and testes lysates. Recombinant SelW is also detected at 10 ng (right lanes). The arrow corresponds with SelW protein at 9.6 kDa. The primary antibody was used at a 1:1000 dilution. Personal Communication, D. Hatfield, NCI, Bethesda, MD.