

Product datasheet for **TA319455**

IL7r Rabbit Polyclonal Antibody

Product data:

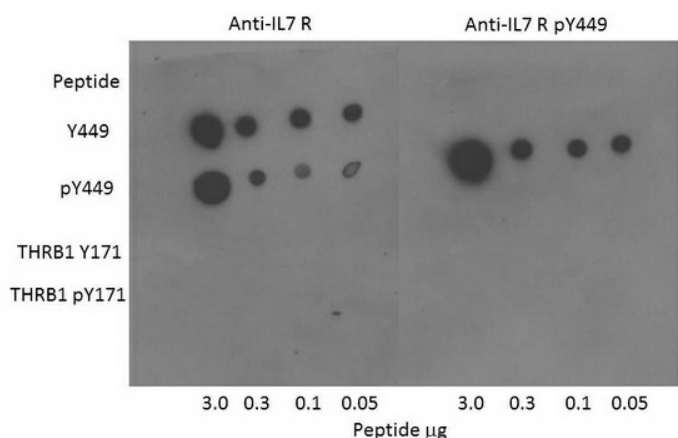
Product Type:	Primary Antibodies
Applications:	Dot
Recommended Dilution:	ELISA: 1:5,000-1:50,000, WB: 1:1,000 - 1:10,000, IHC: User Optimized
Reactivity:	Human, Mouse, Rat
Host:	Rabbit
Isotype:	IgG
Clonality:	Polyclonal
Immunogen:	This affinity purified antibody was prepared from whole rabbit serum produced by repeated immunizations with a synthetic peptide corresponding to a region near the carboxy terminus of mouse IL-7 receptor protein.
Formulation:	0.02 M Potassium Phosphate, 0.15 M Sodium Chloride, pH 7.2
Concentration:	lot specific
Conjugation:	Unconjugated
Storage:	Store at -20°C as received.
Stability:	Stable for 12 months from date of receipt.
Gene Name:	interleukin 7 receptor
Database Link:	NP_032398 Entrez Gene 3575 Human Entrez Gene 294797 Rat Entrez Gene 16197 Mouse P16872
Synonyms:	CD127; CDW127; IL-7R-alpha; IL7RA; ILRA



[View online »](#)

Note: This antibody is suitable for Cancer, Immunology and Nuclear Signaling research. Interleukin-7 is a glycoprotein involved in the regulation of lymphopoiesis. Response of cells to IL7 is dependent on the presence of the interleukin 7 receptor (IL7R); the active receptor is an alpha/gamma chain heterodimer. The gamma(c) chain, which also associates with the interleukin-2 receptor, serves primarily to activate signal transduction by the IL7R complex, while the alpha chain of IL7R determines specific signaling events through its association with cytoplasmic signaling molecules. The human and mouse sequence is nearly identical. In humans, severe combined immunodeficiency is caused by genetic defects in IL-7 receptor. The tyrosine residue at the 449 position is a critical signaling site of the intracellular domain of IL-7 receptor. This site is rapidly phosphorylated by janus kinases after the IL-7 receptor is engaged. IL-7 Receptor Alpha Chain Antibody is ideal for investigators interested in Immunology research.

Product images:



Dot Blot of Rabbit anti-IL-7 Receptor antibody. Antigen: IL-7 Receptor and IL-7 Receptor pY449 forms of the immunizing peptide and THR B1 and THR B1 pY171 as controls. Load: 3.0, 0.3, 0.1, 0.05 ug as indicated. Primary antibody: IL-7 Receptor antibody at 1:400 for 45 min at 4°C. Secondary antibody: Dylight™488 rabbit secondary antibody at 1:10,000 for 45 min at RT. Block: 5% BLOTTO overnight at 4°C.