

Product datasheet for **TA319451**

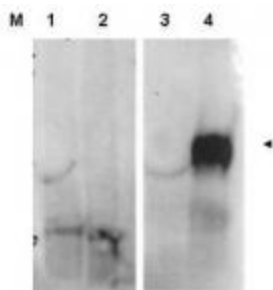
Fap Rabbit Polyclonal Antibody

Product data:

Product Type:	Primary Antibodies
Applications:	WB
Recommended Dilution:	ELISA: 1:100,000, WB: 1:500 to 1:2,000
Reactivity:	Mouse
Host:	Rabbit
Isotype:	IgG
Clonality:	Polyclonal
Immunogen:	This affinity purified antibody was prepared from whole rabbit serum produced by repeated immunizations with a synthetic peptide corresponding to an internal region of mouse FAP protein.
Formulation:	0.02 M Potassium Phosphate, 0.15 M Sodium Chloride, pH 7.2
Concentration:	lot specific
Conjugation:	Unconjugated
Storage:	Store at -20°C as received.
Stability:	Stable for 12 months from date of receipt.
Gene Name:	fibroblast activation protein
Database Link:	NP_032012 Entrez Gene 14089 Mouse P97321
Synonyms:	DKFZp686G13158; DPP4; FAPA; seprase
Note:	This antibody is suitable for Cancer, Immunology and Nuclear Signaling research. Fibroblast Activation Protein (FAP) is expressed in the stroma of sites that are undergoing wound healing. In addition, it has recently been reported that FAP is expressed in the stroma of sites of metastatic disease. Inhibition of FAP may lead to a dramatic decrease in the number of metastatic osteosarcoma lung nodules. FAP exists as an inactive monomer and when activated forms homodimers or heterodimers with DPP4. Multiple isoforms of FAP are reported as alternative splicing products from a common gene.



[View online »](#)

Product images:

WB using Anti-FAP antibody shows detection of FAP protein in whole cell lysates from FAP expressing HEK cells (lane 4) but not control HEK cells (lane 3). Specific band staining is blocked when the primary antibody is pre-incubated with immunizing peptide (lanes 1 and 2 respectively). The band at ~90 kDa, indicated by the arrowhead, corresponds to the expected molecular weight of transfected FAP. Primary antibody was used at 1:1,000. Personal communication, S.Kim, NCI, Bethesda, MD.