

## Product datasheet for **TA319450**

### Cebpd Rabbit Polyclonal Antibody

#### Product data:

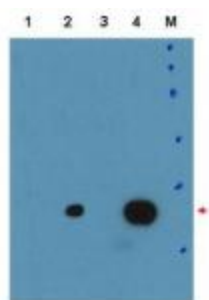
Product Type:	Primary Antibodies
Applications:	WB
Recommended Dilution:	ELISA: 1:4,000 – 1:9,000, WB: 1:1,000 - 1:15,000, IP: 0.8 – 1.5 ug/ml
Reactivity:	Mouse, Human
Host:	Rabbit
Isotype:	IgG
Clonality:	Polyclonal
Immunogen:	This affinity purified antibody was prepared from whole rabbit serum produced by repeated immunizations with a recombinant protein corresponding to the amino terminus of mouse C/EBP.
Formulation:	0.02 M Potassium Phosphate, 0.15 M Sodium Chloride, pH 7.2
Concentration:	lot specific
Conjugation:	Unconjugated
Storage:	Store at -20°C as received.
Stability:	Stable for 12 months from date of receipt.
Gene Name:	CCAAT/enhancer binding protein (C/EBP), delta
Database Link:	<a href="#">NP_031705</a> <a href="#">Entrez Gene 1052 Human</a> <a href="#">Entrez Gene 12609 Mouse</a> <a href="#">Q00322</a>
Synonyms:	C/EBP-delta; CELF; CRP3; NF-IL6-beta



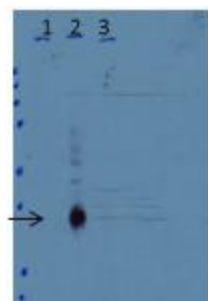
[View online »](#)

**Note:** This antibody is suitable for Cancer, Immunology and Nuclear Signaling research. C/EBP proteins are DNA-binding proteins that are important transcriptional activators in the regulation of genes involved in immune and inflammatory responses and may play an important role in the regulation of the several genes associated with activation and/or differentiation of macrophages. Members of the C/EBP transcription factor family are related by a high degree of amino acid sequence identity to the basic leucine zipper DNA-binding domain and show distinct but overlapping patterns of tissue- and stage-restricted expression. Osada et al. identified the consensus binding site for the family as RTTGCGYAAAY (R = A or G, and Y = C or T). Phosphorylation of C/EBPd may increase binding activity, whereas phosphorylation of the a and b family members may decrease binding affinity. C/EBPd is a nuclear protein that binds DNA as a dimer and can form stable heterodimers with all other C/EBP family members.

### Product images:



Western Blot of Anti-C/EBPd Antibody Lane 1: human C/EBPbeta Lane 2: Mouse C/EBPdelta Lane 3: untransfected Lane 4: human C/EBPdelta Load: 35 ug per lane Primary: Anti-C/EBPd Antibody used at a dilution of 1:15k overnight at 4°C Blocking: buffer TBST ECL was used for detection of overexpressed protein in human and mouse C/EBP delta. Predicted/Observed size: 28.8 kDa, ~35 kDa



Western Blot of Anti-C/EBPd Antibody Lane 1: untreated wild-type (WT) cells Lane 2: WT cells treated 3 h with LPS Lane 3: C/EBPd-knock-out cells treated 3H with LPS Load: 35 ug per lane Primary: Anti-C/EBPd Antibody used at a dilution of 1:15k overnight at 4°C Blocking: buffer TBST ECL was used for detection of endogenous protein in whole cell extracts from mouse primary macrophage cells. Predicted/Observed size: 28.8 kDa, ~35 kDa