

Product datasheet for **TA319449**

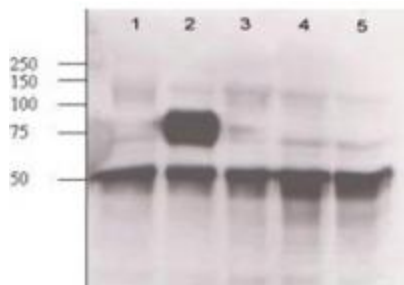
Angpt2 Rabbit Polyclonal Antibody

Product data:

Product Type:	Primary Antibodies
Applications:	WB
Recommended Dilution:	ELISA: 1:5,000 - 1:25,000, WB: 1:500 - 1:2,000
Reactivity:	Human, Mouse
Host:	Rabbit
Isotype:	IgG
Clonality:	Polyclonal
Immunogen:	This whole rabbit serum was prepared by repeated immunizations with a synthetic peptide, corresponding to a region near the N-terminus of mouse angiopoietin-2 protein, conjugated to KLH using maleimide.
Formulation:	0.02 M Potassium Phosphate, 0.15 M Sodium Chloride, pH 7.2
Concentration:	lot specific
Conjugation:	Unconjugated
Storage:	Store at -20°C as received.
Stability:	Stable for 12 months from date of receipt.
Gene Name:	angiopoietin 2
Database Link:	NP_031452 Entrez Gene 285 Human Entrez Gene 11601 Mouse O35608
Synonyms:	AGPT2; ANG-2; ANG2; angiopoietin-2; angiopoietin-2a; angiopoietin-2B; Tie2-ligand
Note:	Anti Angiopoietin-2 Antibody recognizes Angiopoietin-2 (Ang-2) that has importance in development of the endothelium through regulation of tyrosine phosphorylation of the membrane receptor Tie-2/Tek. Ang-1 binding to Tie-2/Tek causes phosphorylation of the receptor. Ang-2 competes for this binding and thus blocks receptor phosphorylation. Ang-2 expression occurs at sites of vascular remodelling; dorsal aorta and major aortic branches, ovary, placenta and uterus.



[View online »](#)

Product images:

Rabbit anti-Ang-2 was used at 1:500 to detect mouse Ang-2 in supernatants of mouse-angiopoietin-expressing endothelial cells. Lane 1 - mock endothelial cells. Lane 2 - mouse Ang-2 (clone 2-9) expressing cells. Lane 3 - mouse Ang-1 (clone 1-15) expressing cells. Lane 4 - mouse Ang-1 (clone 1-8) expressing cells. Lane 5 - wt endothelial cells.