

## Product datasheet for **TA319447**

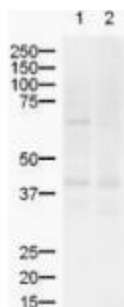
### ZIC2 Rabbit Polyclonal Antibody

#### Product data:

Product Type:	Primary Antibodies
Applications:	WB
Recommended Dilution:	ELISA: 1:10,000 - 1:50,000, WB: 1:500 - 1:2,000
Reactivity:	Human, Chimpanzee, Mouse, Rat, Dog
Host:	Rabbit
Isotype:	IgG
Clonality:	Polyclonal
Immunogen:	This affinity purified antibody was prepared from whole rabbit serum produced by repeated immunizations with a synthetic peptide corresponding amino acids 189-206 of Mouse ZIC-2.
Formulation:	0.02 M Potassium Phosphate, 0.15 M Sodium Chloride, pH 7.2
Concentration:	lot specific
Conjugation:	Unconjugated
Storage:	Store at -20°C as received.
Stability:	Stable for 12 months from date of receipt.
Gene Name:	Zic family member 2
Database Link:	<a href="#">NP_009060</a> <a href="#">Entrez Gene 22772 Mouse</a> <a href="#">Entrez Gene 361096 Rat</a> <a href="#">Entrez Gene 485533 Dog</a> <a href="#">Entrez Gene 7546 Human</a> <a href="#">O95409</a>
Synonyms:	HPE5
Note:	ZIC2 (also known as zinc finger protein of the cerebellum 2, HPE5, Zic family member 2 and odd-paired Drosophila homolog) is a nuclear protein that functions as a transcriptional repressor and may regulate tissue specific expression of dopamine receptor D1. In mouse, knockout of Zic1 leads to aplasia of cerebellum and skeletal abnormalities. Mutation in Zic2 and Zic3 in mouse and/or human cause holoprosencephaly and heterotaxis, respectively. Holoprosencephaly is the most common structural anomaly of the human brain.
Protein Families:	Druggable Genome
Protein Pathways:	Hedgehog signaling pathway



[View online »](#)

**Product images:**

Western blot using Affinity Purified anti-ZIC2 antibody shows detection of a band ~55 kDa (arrowhead) corresponding to ZIC2 in lysates from (lane 1) mouse brain and (lane 2) rat brain. Approximately 20 ug of each lysate was run on a SDS-PAGE and transferred onto nitrocellulose followed by reaction with a 1:500 dilution of anti-ZIC2 antibody. Signal was detected using standard techniques. The upper band in the mouse brain lysate represents Zic2.