

## Product datasheet for **TA319444**

### Nestin (NES) Rabbit Polyclonal Antibody

#### Product data:

Product Type:	Primary Antibodies
Applications:	IHC, WB
Recommended Dilution:	ELISA: 1:20,000 - 1:80,000, WB: 1:500 - 1:3,000
Reactivity:	Human
Host:	Rabbit
Isotype:	IgG
Clonality:	Polyclonal
Immunogen:	This affinity purified antibody was prepared from whole rabbit serum produced by repeated immunizations with a recombinant protein corresponding to amino acids 1484-1500 of human Nestin protein.
Formulation:	0.02 M Potassium Phosphate, 0.15 M Sodium Chloride, pH 7.2
Concentration:	lot specific
Conjugation:	Unconjugated
Storage:	Store at -20°C as received.
Stability:	Stable for 12 months from date of receipt.
Gene Name:	nestin
Database Link:	<a href="#">NP_006608</a> <a href="#">Entrez Gene 10763 Human</a> <a href="#">P48681</a>
Synonyms:	Nbla00170

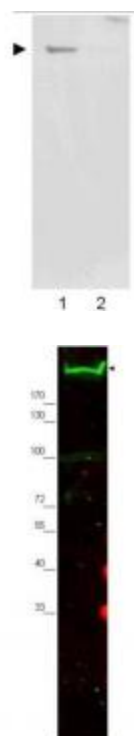


[View online »](#)

**Note:** Nestin, is a large intermediate filament protein (class Type VI) that was first identified with a monoclonal antibody by Hockfield and McKay (1985). Nestin is expressed predominantly in stem cells of the central nervous system in the neural tube. Nestin is expressed during development and in myotendinous and neuromuscular junctions. Nestin expression is restricted, typically disappearing by E18. Nestin is thought to be a reasonable neuronal marker; however, recent studies have found nestin expression in other cell types such as endothelial cells. Nestin expression is seen in almost all GBMs (Glioblastoma multiformes) and many melanomas (both primary and metastatic) but not in any metastatic carcinomas. Upon terminal neural differentiation, nestin is downregulated and replaced by neurofilaments.

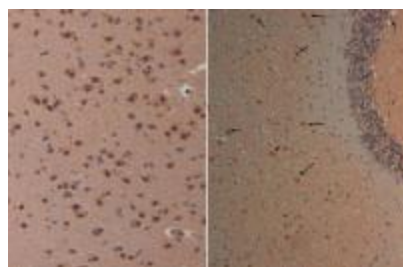
**Protein Families:** ES Cell Differentiation/IPS

## Product images:



WB using Anti-Nestin antibody shows detection of a band ~220 kDa corresponding to human Nestin (arrowhead). Undifferentiated HCN-1A human brain cortical neuron neuronal progenitor lysate (lane 1), or differentiated HCN-1A human brain cortical neuron neuronal progenitor lysate (lane 2) were separated by SDS-PAGE using 4-20% gradient gel. The primary antibody diluted to 1:2,000. Peroxidase conjugated Gt-a-Rabbit IgG [H&L] was used at 1:10000.

WB using Anti-Nestin antibody shows detection of a band ~220 kDa corresponding to mouse Nestin (arrowhead). Approximately 30 g of MEF whole cell lysate was separated by SDS-PAGE using a 4-20% gradient gel. After transfer onto nitrocellulose, the membrane was blocked and then probed with the primary antibody diluted to 1:2,000 overnight at 4?. The membrane was then washed and reacted with a 1:10,000 dilution of IRDye™800 conjugated Gt-a-Rabbit IgG [H&L] MX for 45 min at room temperature.



Immunohistochemistry with Anti-nestin antibody at 40X (left) and 20X (right) Tissue: Brain and Cerebellum (right) Fixation: FFPE buffered formalin 10% conc Antigen retrieval: Heat, Citrate pH 6.2. Pressure Cooker Primary antibody: 20ug/ml 1 hour @ room T Secondary antibody: Goat anti Rabbit Polymer HRP Prediluted by the manufacturer 30 min. @ room T Staining: antibody as precipitated red signal with a hematoxylin purple nuclear counterstain.