

Product datasheet for **TA319442**

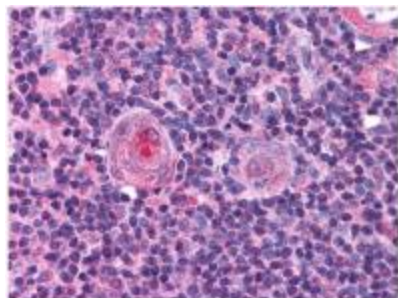
NFYB Rabbit Polyclonal Antibody

Product data:

Product Type:	Primary Antibodies
Applications:	IHC
Recommended Dilution:	ELISA: 1:5,000 - 1:25,000, WB: 1:500 - 1:3,000
Reactivity:	Human
Host:	Rabbit
Isotype:	IgG
Clonality:	Polyclonal
Immunogen:	NF-Y (B subunit specific) peptide corresponding to a region near the N-terminus of the human protein conjugated to Keyhole Limpet Hemocyanin (KLH).
Formulation:	None
Concentration:	lot specific
Conjugation:	Unconjugated
Storage:	Store at -20°C as received.
Stability:	Stable for 12 months from date of receipt.
Gene Name:	nuclear transcription factor Y subunit beta
Database Link:	NP_006157 Entrez Gene 4801 Human P25208
Synonyms:	CBF-A; CBF-B; HAP3; NF-YB
Protein Families:	Transcription Factors
Protein Pathways:	Antigen processing and presentation



[View online »](#)

Product images:

Immunohistochemistry. Anti-NF-Y (B Subunit) antibody was diluted 1:500 to detect NF-YB in human thymus tissue. Tissue was formalin fixed and paraffin embedded. No pre-treatment of sample was required. The image shows the localization of antibody as the precipitated red signal, with a hematoxylin purple nuclear counter stain.