

Product datasheet for **TA319440**

Sprouty 2 (SPRY2) Rabbit Polyclonal Antibody

Product data:

Product Type:	Primary Antibodies
Applications:	IHC
Recommended Dilution:	ELISA: User Optimized, WB: 1:500-1:5,000, IF: User Optimized
Reactivity:	Human
Host:	Rabbit
Isotype:	IgG
Clonality:	Polyclonal
Immunogen:	Anti-Sprouty-2 affinity purified antibody was purified from monospecific rabbit antiserum prepared via repeated immunizations with human sprouty-2 peptide.
Formulation:	0.02 M Potassium Phosphate, 0.15 M Sodium Chloride, pH 7.2
Concentration:	lot specific
Conjugation:	Unconjugated
Storage:	Store at -20°C as received.
Stability:	Stable for 12 months from date of receipt.
Gene Name:	sprouty RTK signaling antagonist 2
Database Link:	NP_005833 Entrez Gene 10253 Human O43597
Synonyms:	hSPRY2; IGAN3
Note:	Sprouty was originally identified as an inhibitor of Drosophila epidermal growth factor (EGF) and fibroblast growth factor (FGF) receptor signaling during tracheal development. Four isoforms of mammalian sprouty are known (Spry1-Spry4). The role of the mammalian analogs has not been clearly elucidated although it is believed that human Sprouty-2 (hSpry2) may be an inhibitor of cellular migration and proliferation. Spry2 and Spry4 show considerable sequence homology between human and mouse at the C-terminus of the protein. Significant sequence divergence occurs at the N-terminus. Spry2 appears to be abundant in brain, lung and heart tissue, with lesser amounts found in kidney and skeletal muscle.

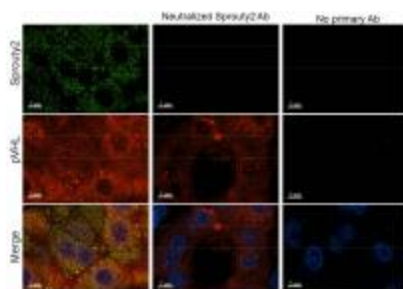


[View online »](#)

Protein Families: Druggable Genome

Protein Pathways: Jak-STAT signaling pathway

Product images:



Immunohistochemistry of Rabbit anti-Sprouty2 antibody. Tissue: human kidney clear cell tumor. Fixation: formalin fixed, paraffin embedded. Antigen retrieval: yes. Primary antibody: Sprouty2 antibody at 1:250. Secondary antibody: alexafluor 488 secondary at 1:500 overnight at 4°C. Localization: nucleus and cytoplasm. Staining: green = sprouty2, Blue = dapi, red= vhl.