

Product datasheet for **TA319431**

CBX4 Rabbit Polyclonal Antibody

Product data:

Product Type:	Primary Antibodies
Applications:	IF, WB
Recommended Dilution:	ELISA: 1:10,000 - 1:40,000, WB: 1:1,000 - 1:4,000, IF: 1:100 - 1:400, IP: 1:100
Reactivity:	Human
Host:	Rabbit
Isotype:	IgG
Clonality:	Polyclonal
Immunogen:	This affinity purified antibody was prepared from whole rabbit serum produced by repeated immunizations with a synthetic peptide corresponding to aa 95-107 of Human PC2 protein.
Formulation:	0.02 M Potassium Phosphate, 0.15 M Sodium Chloride, pH 7.2
Concentration:	lot specific
Conjugation:	Unconjugated
Storage:	Store at -20°C as received.
Stability:	Stable for 12 months from date of receipt.
Gene Name:	chromobox 4
Database Link:	NP_003646 Entrez Gene 8535 Human O00257
Synonyms:	NBP16; PC2

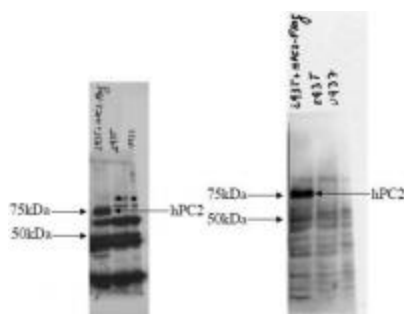


[View online »](#)

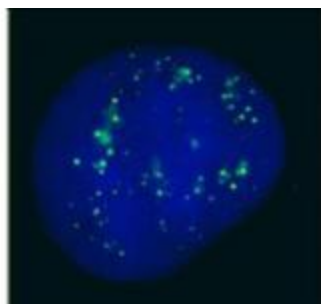
Note: PC2 is the human homolog of the Drosophila 'Polycomb' (Pc) protein which has been identified as a gene family member associated with a cellular memory system that is responsible for the inheritance of gene activity by progeny cells. The human Pc homolog gene is more closely related to a Xenopus Pc homolog, XPc, than to a previously described human Pc homolog, CBX2 (hPc1). However, the hPc2 and CBX2/hPc1 proteins are shown to colocalize in interphase nuclei of human U-2 OS osteosarcoma cells, suggesting that the proteins are part of a common protein complex. The human protein is believed to function as a repressor of proto-oncogene activity and that interference with hPc2 function can lead to derepression of proto-oncogene transcription and subsequently to cellular transformation. Other reports describe PC2 as a protein that has SUMO E3 activity for the corepressors CtBP and CtBP2.

Protein Families: Druggable Genome, Transcription Factors

Product images:



Analysis shows the detection of human PC2 in probed lysates using Affinity Purified anti-hPC2 antibody.



anti-hPC2 antibody was used for immunofluorescent imaging of human cells (U2OS). The image reveals the expected discrete nuclear structure that is termed the PcG body corresponding to the known localization of PC2 (see Satijn et al. below). IF was performed after fixation in PBS with 4% PF for 5 min, permeabilization with 0.5% Triton X100-PBS for 5 min, and blocking with 5% milk / 0.2% Tween for 1 h. Primary antibody used at 1:200 in 5% milk / 0.2% Tween for 1 h, secondary antibody for 30 min.