

Product datasheet for **TA319429**

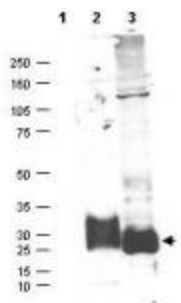
MAGP2 (MFAP5) Rabbit Polyclonal Antibody

Product data:

Product Type:	Primary Antibodies
Applications:	WB
Recommended Dilution:	ELISA: 1:5,000 - 1:20,000, WB: 1:250 - 1:1,000
Reactivity:	Human, Chimpanzee
Host:	Rabbit
Isotype:	IgG
Clonality:	Polyclonal
Immunogen:	This affinity purified antibody was prepared from whole rabbit serum produced by repeated immunizations with a synthetic peptide corresponding to a region near the carboxy terminal end of human MAGP-2 protein.
Formulation:	0.02 M Potassium Phosphate, 0.15 M Sodium Chloride, pH 7.2
Concentration:	lot specific
Conjugation:	Unconjugated
Storage:	Store at -20°C as received.
Stability:	Stable for 12 months from date of receipt.
Gene Name:	microfibrillar associated protein 5
Database Link:	NP_003471 Entrez Gene 8076 Human Q13361
Synonyms:	AAT9; MAGP-2; MAGP2; MFAP-5; MP25
Note:	This antibody is suitable for Cancer, Immunology and Nuclear Signaling research. MAGP-2 (also known as Microfibril-associated glycoprotein 2, MFAP-2, MP25 and Microfibrillar-associated protein 5 precursor) is a secreted, extracellular matrix protein which is a component of the elastin-associated microfibrils. It forms intermolecular disulfide bonds either with other MAGP-2 molecules or with other components of the microfibrils. MAGP-2 is upregulated in some ovarian cancers and is associated with poor survival of ovarian cancer patients.
Protein Families:	Secreted Protein



[View online »](#)

Product images:

Western blot using affinity purified anti-MAGP-2 antibody shows detection (arrowhead) of secreted MAGP-2 (lane 2) and MAGP-2 present in a MAGP-2 transfected HEK293 lysate (lane 3). No staining is detected in supernatants from non-transfected cells (lane 1). After SDS-PAGE and transfer, the membrane was probed with the primary antibody diluted to 1:100 in TBST with 5% BSA overnight at 4°C. Personal Communication, Micheal Birrer, CCR-NCI, Bethesda, MD