

## Product datasheet for **TA319428**

### DNA Polymerase beta (POLB) Rabbit Polyclonal Antibody

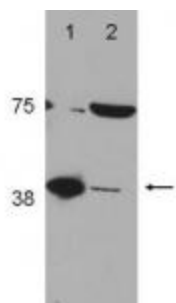
#### Product data:

Product Type:	Primary Antibodies
Applications:	WB
Recommended Dilution:	ELISA: 1:50,000, WB: 0.5 ug/mL
Reactivity:	Human
Host:	Rabbit
Isotype:	IgG
Clonality:	Polyclonal
Immunogen:	This affinity-purified antibody was prepared from whole rabbit serum produced by repeated immunizations with a synthetic peptide corresponding to a region near the C-terminus of the POL $\beta$ protein.
Formulation:	0.02 M Potassium Phosphate, 0.15 M Sodium Chloride, pH 7.2
Concentration:	lot specific
Conjugation:	Unconjugated
Storage:	Store at -20°C as received.
Stability:	Stable for 12 months from date of receipt.
Gene Name:	polymerase (DNA) beta
Database Link:	<a href="#">NP_002681</a> <a href="#">Entrez Gene 5423 Human</a> <a href="#">P06746</a>
Synonyms:	MGC125976
Note:	The POL $\beta$ protein belongs to the DNA polymerase type-X family. It is a DNA polymerase involved in gap-filling DNA synthesis or base excision and repair in a stepwise distributive fashion unlike other DNA polymerases. It is required for DNA maintenance, replication, recombination, and drug resistance. It is normally found as a monomer, in the cytoplasm and it translocates to the nucleus upon DNA damage.
Protein Families:	Druggable Genome
Protein Pathways:	Base excision repair



[View online »](#)

## Product images:



Western Blot of Rabbit Anti-POLB (DNA polymerase beta) Antibody (TA319428). Lane 1: LN428 FLAG POLB (control). Lane 2: A172. Load: 35  $\mu$ g per lane. Primary antibody: POLB antibody at 1:2000 for overnight at 4°C. Secondary antibody: IRDye800,  $\alpha$  goat anti-rabbit at 1:10,000 for 45 min at RT. Block: 5% BLOTTO overnight at 4°C. Predicted/Observed size: ~40 kDa, ~40 kDa. Other band (s): unknown band ~75 kDa.