

## Product datasheet for **TA319427**

### NFYA Rabbit Polyclonal Antibody

#### Product data:

Product Type:	Primary Antibodies
Applications:	IHC, WB
Recommended Dilution:	ELISA: 1:20,000 - 1:100,000, WB: 1:2,000 - 1:10,000, IHC: 1:400, Gel Shift: Use 2.0 uL
Reactivity:	Human
Host:	Rabbit
Isotype:	IgG
Clonality:	Polyclonal
Immunogen:	NF-Y (A subunit specific) peptide corresponding to a region near the N-terminus of the human protein conjugated to Keyhole Limpet Hemocyanin (KLH).
Formulation:	None
Concentration:	lot specific
Conjugation:	Unconjugated
Storage:	Store at -20°C as received.
Stability:	Stable for 12 months from date of receipt.
Gene Name:	nuclear transcription factor Y subunit alpha
Database Link:	<a href="#">NP_002496</a> <a href="#">Entrez Gene 4800 Human P23511</a>
Synonyms:	CBF-A; CBF-B; HAP2; NF-YA



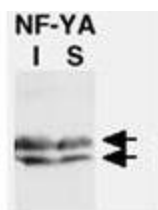
[View online »](#)

**Note:** Nuclear transcription factor Y subunit alpha is a protein that in humans is encoded by the NFYA gene. The protein encoded by this gene is one subunit of a trimeric complex, forming a highly conserved transcription factor that binds to CCAAT motifs in the promoter regions in a variety of genes. Subunit A associates with a tight dimer composed of the B and C subunits, resulting in a trimer that binds to DNA with high specificity and affinity. The sequence specific interactions of the complex are made by the A subunit, suggesting a role as the regulatory subunit. In addition, there is evidence of post-transcriptional regulation in this gene product, either by protein degradation or control of translation. Further regulation is represented by alternative splicing in the glutamine-rich activation domain, with clear tissue-specific preferences for the two isoforms. Anti-NF-Y is ideal for investigators involved in transcription factor research.

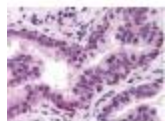
**Protein Families:** Transcription Factors

**Protein Pathways:** Antigen processing and presentation

### Product images:



WB of Rabbit Anti-NF-Y (A Subunit) Antibody. Lane 1: CHO-7 cells were cultured in the absence (I) of cholesterol. Lane 2: CHO-7 cells were cultured in the presence (S) of cholesterol. Load: 35 ug per lane. Primary antibody: NF-YA antibody at 1:1000 for overnight at 4°C. Secondary antibody: HRP conjugated Goat-anti-Rabbit IgG [H&L] secondary antibody at 1:10,000 for 45 min at RT. Block: 5% BLOTTO overnight at 4°C.



Immunohistochemistry of Rabbit anti-NF-Y (A Subunit) antibody. Tissue: human prostate tissue. Fixation: formalin fixed paraffin embedded. Antigen retrieval: not required. Primary antibody: NF-Y antibody at 10 ug/mL for 1 h at RT. Secondary antibody: Peroxidase rabbit secondary antibody at 1:10,000 for 45 min at RT. Localization: NF-Y is nuclear. Staining: NF-Y subunit A as precipitated red signal with hematoxylin purple nuclear counterstain.