

Product datasheet for **TA319418**

ING1 Goat Polyclonal Antibody

Product data:

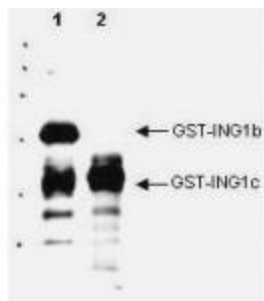
Product Type:	Primary Antibodies
Applications:	WB
Recommended Dilution:	ELISA: 1:4,000 - 1:14,000, WB: 1:500 - 1:3,000
Reactivity:	Human
Host:	Goat
Clonality:	Polyclonal
Immunogen:	This affinity purified antibody was prepared from whole Goat serum produced by repeated immunizations with a synthetic peptide corresponding aa 285-296 of Human p33 ING1 protein (Inhibitor of growth family, member 1). This sequence shows 100% homology to all splice variants for ING1.
Formulation:	0.02 M Potassium Phosphate, 0.15 M Sodium Chloride, pH 7.2
Concentration:	lot specific
Conjugation:	Unconjugated
Storage:	Store at -20°C as received.
Stability:	Stable for 12 months from date of receipt.
Gene Name:	inhibitor of growth family member 1
Database Link:	NP_001254657 Entrez Gene 3621 Human Q9UK53
Synonyms:	p24ING1c; p33; p33ING1; p33ING1b; p47; p47ING1a
Note:	p33 ING1 is a tumor suppressor protein that can induce cell growth arrest and apoptosis. The encoded protein is a nuclear protein that physically interacts with the tumor suppressor protein TP53 and is a component of the p53-signaling pathway. Reduced expression and rearrangement of this gene have been detected in various cancers. Multiple alternatively spliced transcript variants encoding distinct isoforms have been reported. The accession number listed below is for variant (4) that encodes the longest isoform (D). Other synonyms for p33 ING1 include p33, p47, p33ING1, p24ING1c, p33ING1b, p47ING1a, growth inhibitor ING1, inhibitor of growth 1, tumor suppressor ING1 and growth inhibitory protein ING1.



[View online »](#)

Protein Families: Druggable Genome, Transcription Factors

Product images:



WB analysis using Anti-p33 ING1 antibody to detect over expressed Human ING1 present in cell nuclear extracts. This WB shows reactivity with purified recombinant GST tagged human ING1b (lane 1) and ING1c protein (lane 2). No reactivity is seen against GST or other ING proteins (not shown). Reactivity of this polyclonal antibody is similar to the specificity of a positive control monoclonal antibody (not shown). The blot was incubated with a 1:1,000 dilution of the antibody at RT.