

## Product datasheet for **TA319417**

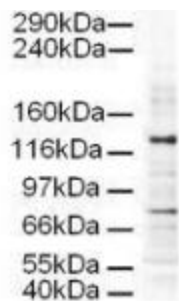
### AP3D1 Goat Polyclonal Antibody

#### Product data:

Product Type:	Primary Antibodies
Applications:	WB
Recommended Dilution:	ELISA: 1:5,000 - 1:20,000, WB: 1:500 - 1:2,000, IP: 1:100
Reactivity:	Human, Chicken, Chimpanzee
Host:	Goat
Clonality:	Polyclonal
Immunogen:	This affinity purified antibody was prepared from whole goat serum produced by repeated immunizations with a synthetic peptide corresponding aa 686-698 of Human AP3D1.
Formulation:	0.02 M Potassium Phosphate, 0.15 M Sodium Chloride, pH 7.2
Concentration:	lot specific
Conjugation:	Unconjugated
Storage:	Store at -20°C as received.
Stability:	Stable for 12 months from date of receipt.
Gene Name:	adaptor related protein complex 3 delta 1 subunit
Database Link:	<a href="#">NP_003929</a> <a href="#">Entrez Gene 8943 Human</a> <a href="#">Q14617</a>
Synonyms:	ADTD; hBLVR; HPS10
Note:	AP3D1 (also known as Delta-adaptin 3, AP-3 complex delta subunit and Delta-adaptin) is a subunit of the AP3 adaptor-like complex, which is not associated with clathrin. The AP3D1 subunit is implicated in intracellular biogenesis and trafficking of pigment granules and possibly platelet dense granules and neurotransmitter vesicles.
Protein Families:	Druggable Genome
Protein Pathways:	Lysosome



[View online »](#)

**Product images:**

WB using Anti-AP3D1 antibody shows detection of a 130-kDa band corresponding to Human AP3D1 in a HeLa whole cell lysate. The lower molecular weight band most likely represents non-specific binding. Approximately 20 ug of lysate was run on a SDS-PAGE and transferred onto nitrocellulose followed by reaction with a 1:500 dilution of anti-AP3D1 antibody. Detection occurred using a 1:5,000 dilution of HRP-labeled Rabbit anti-Goat IgG for 1 hour at room temperature.