

Product datasheet for **TA319416**

CDK9 Rabbit Polyclonal Antibody

Product data:

| | |
|-----------------------|---|
| Product Type: | Primary Antibodies |
| Applications: | WB |
| Recommended Dilution: | ELISA: 1:5,000 - 1:24,000, WB: 1:200 - 1:2,000, IP: 1:100 |
| Reactivity: | Human, Mouse, Rat |
| Modifications: | Phospho-specific |
| Host: | Rabbit |
| Isotype: | IgG |
| Clonality: | Polyclonal |
| Immunogen: | This affinity purified antibody was prepared from whole rabbit serum produced by repeated immunizations with a synthetic peptide corresponding to residues surrounding T29 in the human CDK9 protein. |
| Formulation: | 0.02 M Potassium Phosphate, 0.15 M Sodium Chloride, pH 7.2 |
| Concentration: | lot specific |
| Conjugation: | Unconjugated |
| Storage: | Store at -20°C as received. |
| Stability: | Stable for 12 months from date of receipt. |
| Gene Name: | cyclin-dependent kinase 9 |
| Database Link: | NP_001252 Entrez Gene 107951 MouseEntrez Gene 362110 RatEntrez Gene 1025 Human P50750 |
| Synonyms: | C-2k; CDC2L4; CTK1; PITALRE; TAK |

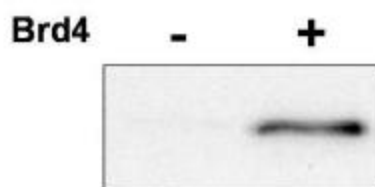


[View online »](#)

Note: This antibody is suitable for Cancer, Immunology and Nuclear Signaling research. CDK9 (PITALRE) (also known as cyclin-dependent kinase 9, Serine/threonine-protein kinase PITALRE, C-2K and Cell division cycle 2-like protein kinase 4) is a member of the cyclin-dependent protein kinase (CDK) family. CDK family members are highly similar to the gene products of *S. cerevisiae* cdc28 and *S. pombe* cdc2 and are known as important cell cycle regulators. CDK9 (PITALRE) interacts with a conserved domain in the TRAF-C region of the tumor necrosis factor signal transducer TRAF2. This kinase was also found to be a component of the multiprotein complex TAK/P-TEFb, which is an elongation factor for RNA polymerase II-directed transcription and functions by phosphorylating the C-terminal domain of the largest subunit of RNA polymerase II. This protein forms a complex with, and is regulated by, its regulatory subunit, cyclin T or cyclin K. HIV-1 Tat protein

Protein Families: Druggable Genome, Protein Kinase, Transcription Factors

Product images:



Western blot using affinity purified anti-CDK9 pT29 antibody shows detection of phosphorylated CDK9. 100 ng of purified P-TEFb, which contains CDK9 and its regulatory cyclin T1 subunit, was incubated with ATP in the presence or absence of Brd4, a protein known to induce CDK9 phosphorylation at T29. The primary antibody was used at a 1:1000 dilution. Personal Communication, J. Brady, NCI, Bethesda, MD.