

## Product datasheet for **TA319413**

### Apc10 (ANAPC10) Rabbit Polyclonal Antibody

#### Product data:

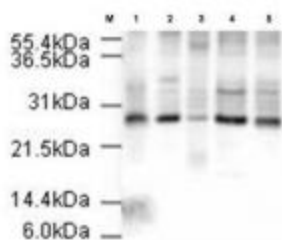
Product Type:	Primary Antibodies
Applications:	WB
Recommended Dilution:	ELISA: 1:15,000 - 1:80,000, WB: 1:500 - 1:1,500, IHC: 1:250 - 1:1,000, IP: 1:100
Reactivity:	Human
Host:	Rabbit
Isotype:	IgG
Clonality:	Polyclonal
Immunogen:	This affinity purified antibody was prepared from whole rabbit serum produced by repeated immunizations with a synthetic peptide corresponding to amino acids near the amino terminus of human APC10.
Formulation:	0.02 M Potassium Phosphate, 0.15 M Sodium Chloride, pH 7.2
Concentration:	lot specific
Conjugation:	Unconjugated
Storage:	Store at -20°C as received.
Stability:	Stable for 12 months from date of receipt.
Gene Name:	anaphase promoting complex subunit 10
Database Link:	<a href="#">NP_055700</a> <a href="#">Entrez Gene 10393 Human</a> <a href="#">Q9UM13</a>
Synonyms:	APC10; DOC1
Note:	APC (Anaphase-Promoting Complex or Cyclosome) is a ubiquitin ligase which specifically targets mitotic regulatory factors such as Pds1/Cut2 and cyclin B. It was found that APC10/Doc1 is localized in centrosomes and mitotic spindles throughout mitosis, while it is also localized in kinetochores from prophase to anaphase and in mid-body in telophase and cytokinesis. These results strongly support the notion that human APC10/Doc1 may be one of the APC core subunits rather than the transiently associated regulatory factor.
Protein Families:	Druggable Genome



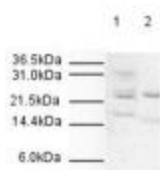
[View online »](#)

**Protein Pathways:** Cell cycle, Oocyte meiosis, Progesterone-mediated oocyte maturation, Ubiquitin mediated proteolysis

## Product images:



Rabbit anti-APC10 was used at 1:500 to detect human APC10 in various cell extracts. All lanes contain 20 ug of lysate or extract as follows: lane 1, HeLa nuclear extract; lane 2, HeLa whole cell lysate; lane 3, A431 whole cell lysate; lane 4, Jurkat whole cell lysate; lane 5, 293 whole cell lysate. Primary antibody was reacted with the membrane at RT for 1 h. After subsequent washing, a 1:5,000 dilution of HRP conjugated Gt-a-Rabbit IgG was used for visualization.



Rabbit anti-APC10 was used at 1:500 to detect human APC10 by WB. Both HeLa whole cell lysate (lane 1) and nuclear lysate (lane 2) were probed using this antibody. Approximately 20 ug of each lysate was loaded onto a 10% SDS-PAGE gel. Primary antibody was reacted with the membrane at RT for 1 h. After subsequent washing, a 1:2,000 dilution of HRP conjugated Gt-a-Rabbit IgG was used for visualization. The expected molecular weight of human APC10 is 21 kDa.