

Product datasheet for **TA319408**

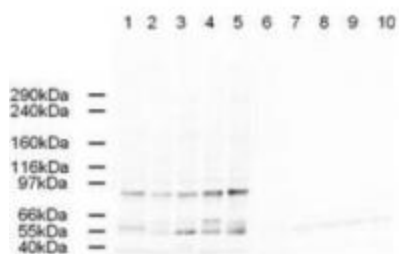
alpha Adaptin (AP2A2) Goat Polyclonal Antibody

Product data:

Product Type:	Primary Antibodies
Applications:	WB
Recommended Dilution:	ELISA: 1:5,000 - 1:20,000, WB: 1:500 - 1:2,000, IP: 1:100
Reactivity:	Human, Chimpanzee, Mouse, Rat, Chicken, Dog, Orang-Utan
Host:	Goat
Clonality:	Polyclonal
Immunogen:	This affinity purified antibody was prepared from whole goat serum produced by repeated immunizations with a synthetic peptide corresponding aa 3-14 of Human AP2A1 and AP2A2 proteins.
Formulation:	0.02 M Potassium Phosphate, 0.15 M Sodium Chloride, pH 7.2
Concentration:	lot specific
Conjugation:	Unconjugated
Storage:	Store at -20°C as received.
Stability:	Stable for 12 months from date of receipt.
Gene Name:	adaptor related protein complex 2 alpha 2 subunit
Database Link:	NP_036437 Entrez Gene 11772 Mouse Entrez Gene 81637 Rat Entrez Gene 475994 Dog Entrez Gene 161 Human O94973
Synonyms:	ADTAB; CLAPA2; HIP-9; HIP9; HYPJ
Note:	The AP2A1 and AP2A2 represent the AP2 alpha proteins that are found in the AP2 complex in clathrin-coated vesicles. AP2A is also known as Alpha-adaptin A, Adaptor protein complex AP-2 alpha-1 subunit, Clathrin assembly protein complex 2 alpha-A large chain, 100 kDa coated vesicle protein A and Plasma membrane adaptor HA2/AP2 adaptin alpha A subunit. The AP2 complex is a heterotetramer consisting of two large adaptins (alpha or beta), a medium adaptin (mu), and a small adaptin (sigma). The complex is part of the protein coat on the cytoplasmic face of coated vesicles, which link clathrin to receptors in vesicles.
Protein Pathways:	Endocytosis, Huntington's disease



[View online »](#)

Product images:

WB using Anti-AP2A antibody shows detection of a band just below 100 kDa corresponding to Human AP2A1 in various preparations. Lane 1 - HeLa nuclear extract, Lane 2 - HeLa, Lane 3 - 293, Lane 4 - A431 and Lane 5 - Jurkat whole cell lysates. In lanes 6-10 the antibody was preincubated with 1 ug/ml of the immunizing peptide which effectively blocks the specific reactivity of this antibody with AP2A. Primary antibody was used at 1:500.