

## Product datasheet for **TA319406**

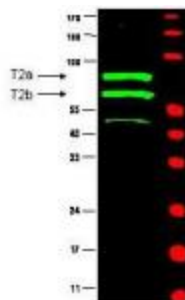
### Cyclin T2 (CCNT2) Rabbit Polyclonal Antibody

#### Product data:

Product Type:	Primary Antibodies
Applications:	WB
Recommended Dilution:	ELISA: 1:5,000 - 1:20,000, WB: 1:500 - 1:2,000, IP: 1:100
Reactivity:	Human
Host:	Rabbit
Isotype:	IgG
Clonality:	Polyclonal
Immunogen:	This antibody was prepared from whole rabbit serum produced by repeated immunizations with a recombinant protein corresponding to amino acids 1-584 of human Cyclin T2a protein.
Formulation:	None
Concentration:	lot specific
Conjugation:	Unconjugated
Storage:	Store at -20°C as received.
Stability:	Stable for 12 months from date of receipt.
Gene Name:	cyclin T2
Database Link:	<a href="#">NP_001232</a> <a href="#">Entrez Gene 905 Human</a> <a href="#">O60583</a>
Synonyms:	CYCT2
Note:	Cyclin T2 is a ubiquitously expressed nuclear protein that is a member of the highly conserved cyclin family, whose members are characterized by a dramatic periodicity in protein abundance through the cell cycle. Cyclins function as regulators of CDK kinases. Different cyclins exhibit distinct expression and degradation patterns that contribute to the temporal coordination of each mitotic event. This cyclin and its kinase partner CDK9 were found to be subunits of the transcription elongation factor p-TEFb. The p-TEFb complex containing this
Protein Families:	Druggable Genome, Transcription Factors



[View online »](#)

**Product images:**

WB using Anti-Cyclin T2 (Rabbit) to detect two major bands (arrowheads) corresponding to human Cyclin T2a and T2b as indicated. The primary antibody diluted to 1:500 in 5% BLOTTO in PBS. The membrane was washed and reacted with a 1:10,000 dilution of IRDye™800 conjugated Gt-a-Rabbit IgG [H&L] for 45 min at RT. Molecular weight estimation was made by comparison to prestained MW markers indicated at the right (700 nm channel, red).