

Product datasheet for **TA319405**

Cyclin T1 (CCNT1) Rabbit Polyclonal Antibody

Product data:

Product Type:	Primary Antibodies
Applications:	IHC
Recommended Dilution:	ELISA: 1:1,000 - 1:5,000, WB: 1:500 - 1:2,000, IHC: 1:200 - 1:1,000, IP: 1:100
Reactivity:	Human, Mouse, Rat
Host:	Rabbit
Isotype:	IgG
Clonality:	Polyclonal
Immunogen:	Cyclin T1 peptide corresponding to an internal region of the human protein conjugated to Keyhole Limpet Hemocyanin (KLH).
Formulation:	0.02 M Potassium Phosphate, 0.15 M Sodium Chloride, pH 7.2
Concentration:	lot specific
Conjugation:	Unconjugated
Storage:	Store at -20°C as received.
Stability:	Stable for 12 months from date of receipt.
Gene Name:	cyclin T1
Database Link:	NP_001231 Entrez Gene 12455 MouseEntrez Gene 315291 RatEntrez Gene 904 Human O60563
Synonyms:	CCNT; CYCT1; HIVE1

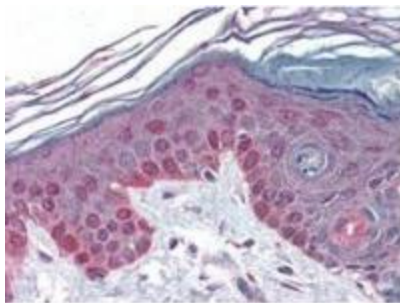


[View online »](#)

Note: Cyclin T1, together with the kinase CDK9, is a component of the transcription elongation factor P-TEFb which binds the human immunodeficiency virus type 1 (HIV-1) transactivator Tat. Tat stimulates human HIV-1 viral transcription elongation. This suggests that cyclin T1/cdk9(PITALRE) is one of the HIV-1 required host cellular cofactors generated during T cell activation. Cyclin T1/cdk9(PITALRE) is shown to interact with Tat to restore Tat activation in HeLa nuclear extracts depleted of P-TEFb. P-TEFb facilitates transcription by phosphorylating the carboxy-terminal domain (CTD) of RNA polymerase II. The cdk9(PITALRE) activity and cyclin T1 are essential for activation of transcription when tethered to the heterologous Rev response element RNA via the regulator of expression of virion Rev. Cyclin T1 is an exceptionally large cyclin and is therefore a candidate for interactions with regulatory proteins.

Protein Families: Druggable Genome, Transcription Factors

Product images:



Amino acids are numbered on the bottom of each protein. The cyclin box is indicated. Human cyclins T2a and T2b have 642 amino acids in common but different carboxyl termini (black boxes).