

## Product datasheet for **TA319397**

### Cullin 2 (CUL2) Rabbit Polyclonal Antibody

#### Product data:

Product Type:	Primary Antibodies
Applications:	IHC
Recommended Dilution:	ELISA: 1:2,000 - 1:10,000, WB: 1:500 - 1:1,000, IHC: User Optimized
Reactivity:	Human
Host:	Rabbit
Isotype:	IgG
Clonality:	Polyclonal
Immunogen:	This antibody was prepared from whole rabbit serum produced by repeated immunizations with a synthetic peptide corresponding to amino acids 733-745 of Human Cul2 (C-terminus) coupled to KLH.
Formulation:	None
Concentration:	lot specific
Conjugation:	Unconjugated
Storage:	Store at -20°C as received.
Stability:	Stable for 12 months from date of receipt.
Gene Name:	cullin 2
Database Link:	<a href="#">NP_003582</a> <a href="#">Entrez Gene 8453 Human</a> <a href="#">Q13617</a>
Synonyms:	MGC131970



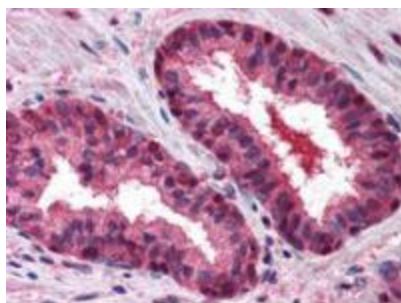
[View online »](#)

**Note:** Cullins assemble a potentially large number of ubiquitin ligases by binding to the RING protein ROC1 to catalyse polyubiquitination, as well as binding to various specificity factors to recruit substrates. Cullin 2 is an essential component of the SCF (SKP1-CUL1-F-box protein) E3 ubiquitin ligase complex, which mediates the ubiquitination of proteins involved in cell cycle progression, signal transduction and transcription. In the SCF complex, cul2 serves as a rigid scaffold that organizes the SKP1-F-box protein and RBX1 subunits. Cul2 may also contribute to catalysis through positioning of the substrate and the ubiquitin-conjugating enzyme. Cul2 is part of the SCF complex consisting of CUL1, RBX1, SKP1 and SKP2, where it interacts directly with SKP1, SKP2 and RBX1. Cul2 also interacts with RNF7 and is part of a complex with TIP120A/CAND1 and RBX1. The unneddylated form interacts with TIP120A/CAND1 and the interaction negatively regulates the association with SKP1 in the SCF complex.

**Protein Families:** Druggable Genome

**Protein Pathways:** Pathways in cancer, Renal cell carcinoma, Ubiquitin mediated proteolysis

**Product images:**



Anti-CUL2 antibody was diluted 1:500 to detect CUL2 in human prostate tissue. Tissue was formalin fixed and paraffin embedded. No pre-treatment of sample was required. The image shows the localization of antibody as the precipitated red signal, with a hematoxylin purple nuclear counter stain.