

## Product datasheet for **TA319396**

### CTCF Rabbit Polyclonal Antibody

#### Product data:

Product Type:	Primary Antibodies
Applications:	WB
Recommended Dilution:	ELISA: 1:10,000-1:50,000, WB: 1:500-1:2:000
Reactivity:	Human, Mouse
Host:	Rabbit
Isotype:	IgG
Clonality:	Polyclonal
Immunogen:	CTCF affinity purified antibody was prepared by repeated immunizations with a synthetic peptide corresponding to a region near the C-terminus of CTCF protein.
Formulation:	0.02 M Potassium Phosphate, 0.15 M Sodium Chloride, pH 7.2
Concentration:	lot specific
Conjugation:	Unconjugated
Storage:	Store at -20°C as received.
Stability:	Stable for 12 months from date of receipt.
Gene Name:	CCCTC-binding factor
Database Link:	<a href="#">NP_006556</a> <a href="#">Entrez Gene 13018 Mouse</a> <a href="#">Entrez Gene 10664 Human</a> <a href="#">P49711</a>
Synonyms:	MRD21

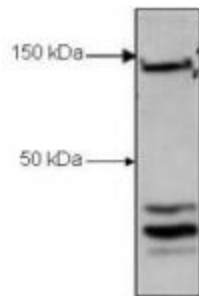


[View online »](#)

**Note:** Transcriptional repressor CTCF (also known as CCCTC-binding factor) is a transcription factor encoded by the CTCF gene. The CTCF, and the closely related Brother of the Regulator of Imprinted Sites (BORIS), are highly conserved zinc finger proteins implicated in diverse regulatory functions, including transcriptional activation/repression, insulation, imprinting, and X chromosome inactivation. Expression of BORIS is restricted to spermatocytes and is mutually exclusive of CTCF expression. CTCF is ubiquitously expressed in higher eukaryotes and contains a highly conserved and eleven zinc finger central DNA-binding domain, having very high homology between mouse, chicken, and human and is embedded within slightly divergent N and C termini. CTCF plays a critical role in the epigenetic regulation and chromatin remodeling. CTCF has been reported to bind to a variety of DNA target sites that perform distinct functions, including promoter activation or repression, hormone-responsive gene silencing, methylation-dependent chromatin insulation, and genomic imprinting.

**Protein Families:** Transcription Factors

**Product images:**



Western Blot of Rabbit Anti-CTCF antibody. Lane 1: H929 nuclear cell lysates. Load: 30 ug per lane. Primary antibody: CTCF antibody at 1.2 ug/mL for overnight at 4°C. Secondary antibody: IRDye800™ rabbit secondary antibody at 1:5,000 for 45 min at RT. Block: 3% BSA overnight at 4°C. Predicted/Observed size: 82.8 kDa or 150 kDa for CTCF. Other band (s): CTCF splice variants.