

Product datasheet for **TA319380**

SRC3 (NCOA3) Rabbit Polyclonal Antibody

Product data:

Product Type:	Primary Antibodies
Applications:	WB
Recommended Dilution:	ELISA: 1:175,000, WB: 1:500 - 1:1,000, IP: 1:100
Reactivity:	Human
Host:	Rabbit
Isotype:	IgG
Clonality:	Polyclonal
Immunogen:	This affinity purified antibody was prepared from whole rabbit serum produced by repeated immunizations with a synthetic peptide corresponding to an internal region of human NCOA3 isoform a protein.
Formulation:	0.02 M Potassium Phosphate, 0.15 M Sodium Chloride, pH 7.2
Concentration:	lot specific
Conjugation:	Unconjugated
Storage:	Store at -20°C as received.
Stability:	Stable for 12 months from date of receipt.
Gene Name:	nuclear receptor coactivator 3
Database Link:	NP_001167558 Entrez Gene 8202 Human Q9Y6Q9
Synonyms:	ACTR; AIB-1; AIB1; bHLHe42; CAGH16; CTG26; KAT13B; pCIP; RAC3; SRC-3; SRC3; TNRC14; TNRC16; TRAM-1

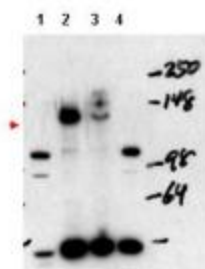


[View online »](#)

Note: This antibody is suitable for Cancer, Immunology and Nuclear Signaling research. The NCOA3 (also known as nuclear receptor coactivator 3 isoform a) is a nuclear receptor coactivator that interacts with nuclear hormone receptors to enhance their transcriptional activator functions in a hormone-dependent fashion. The encoded protein has histone acetyltransferase activity and recruits p300/CBP-associated factor and CREB binding protein as part of a multisubunit coactivation complex. NCOA3 probably acts via remodeling of chromatin and is involved in the coactivation of different nuclear receptors, such as for steroids (GR and ER), retinoids (RARs and RXRs), thyroid hormone (TRs)

Protein Families: Druggable Genome, Transcription Factors

Product images:



WB using Anti-NCOA3 antibody shows detection of NCOA3 in mouse liver nuclear extract (lane 1), transiently transfected 293 cell lysate (lane 2), HeLa whole cell lysate (lane 3) and mouse thyroid cell nuclear extract (lane 4). The band at ~148 kDa, indicated by the arrowhead, corresponds to NCOA3. Mouse NCOA3 (lanes 1 and 4) appear as ~105 kDa bands. Pre-incubation of antibody with the immunizing peptide blocks detection of specific band staining (not shown).