

Product datasheet for **TA319379**

GGA3 Rabbit Polyclonal Antibody

Product data:

Product Type:	Primary Antibodies
Applications:	WB
Recommended Dilution:	ELISA: 1:10,000 - 1:50,000, WB: 1:500 - 1:3,000, IP: 1:100
Reactivity:	Human, Chimpanzee
Host:	Rabbit
Isotype:	IgG
Clonality:	Polyclonal
Immunogen:	This affinity-purified antibody was prepared from whole rabbit serum produced by repeated immunizations with a synthetic peptide corresponding to amino acids 400-415 of Human GGA3.
Formulation:	0.02 M Potassium Phosphate, 0.15 M Sodium Chloride, pH 7.2
Concentration:	lot specific
Conjugation:	Unconjugated
Storage:	Store at -20°C as received.
Stability:	Stable for 12 months from date of receipt.
Gene Name:	golgi associated, gamma adaptin ear containing, ARF binding protein 3
Database Link:	NP_619525 Entrez Gene 23163 Human Q9NZ52
Synonyms:	KIAA0154



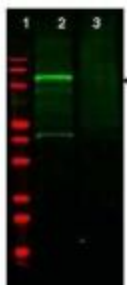
[View online »](#)

Note: GGA3 (also known as ADP-ribosylation factor binding protein GGA3, Golgi-localized, gamma ear-containing, ARF-binding protein 3, Gamma-adaptin related protein 3) plays a role in protein sorting and trafficking between the trans-Golgi network (TGN) and endosomes. This protein mediates the ARF-dependent recruitment of clathrin to the TGN and binds ubiquitinated proteins and membrane cargo molecules with a cytosolic acidic cluster-dileucine (AC-LL) motif. GGA1 is a monomeric protein that interacts with SORT1, SORL1, LRP3, GGA binding partner (GGABP) and P200, GGA1 and GGA2 as well as RABEP1, RABGEF1 and type-I membrane proteins M6PR/CD-MPR, IGF2R/CI-MPR and BACE1. GGA3 is a ubiquitously expressed membrane-associated protein that is localized to TGN and endosomes. Multiple alternatively spliced transcript variants encoding different isoforms have been found for this gene.

Protein Families: Druggable Genome

Protein Pathways: Lysosome

Product images:



WB using Anti-GGA3 antibody shows detection of a band at ~110 kDa corresponding to GFP-GGA3 fusion protein present in a lysate of HEK293 cells over-expressing the recombinant protein (lane 2, arrowhead). Pre-incubation of antibody with immunizing peptide blocks specific staining (lane 3). MW markers are shown in lane 1 (700 nm channel - red). The primary antibody was diluted to 1:600.