

Product datasheet for **TA319378**

Cullin 7 (CUL7) Rabbit Polyclonal Antibody

Product data:

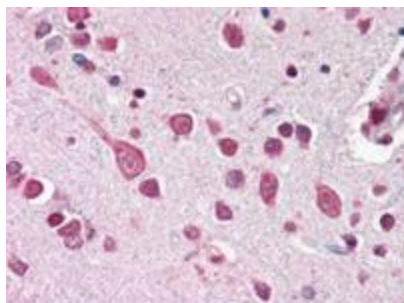
Product Type:	Primary Antibodies
Applications:	IHC
Recommended Dilution:	ELISA: 1:2,000 - 1:10,000, WB: 1:500 - 1:1,000, IHC: User Optimized
Reactivity:	Human
Host:	Rabbit
Isotype:	IgG
Clonality:	Polyclonal
Immunogen:	This antibody was prepared from whole rabbit serum produced by repeated immunizations with a synthetic peptide corresponding to amino acids 1679-1698 of Human Cul7 (C-terminus) coupled to KLH.
Formulation:	None
Concentration:	lot specific
Conjugation:	Unconjugated
Storage:	Store at -20°C as received.
Stability:	Stable for 12 months from date of receipt.
Gene Name:	cullin 7
Database Link:	NP_055595 Entrez Gene 9820 Human Q14999
Synonyms:	3M1; CUL-7; dj20C7.5; KIAA0076
Note:	Cullins assemble a potentially large number of ubiquitin ligases by binding to the RING protein ROC1 to catalyse polyubiquitination, as well as binding to various specificity factors to recruit substrates. Cullin 7 is a component of E3 ubiquitin ligase complexes, which mediate the ubiquitination and subsequent proteasomal degradation of target proteins. Cullin 7 seems to be involved proteasomal degradation of proteins involved in endothelial proliferation and/or differentiation. Cullin 7 is part of a SCF-like complex consisting of CUL7, RBX1, SKP1, FBXW8 and GLMN isoform 1. Cullin 7 interacts with a complex of SKP1 and FBXW8, but not with SKP1 alone.



[View online »](#)

Protein Pathways: Ubiquitin mediated proteolysis

Product images:



Anti-CUL7 antibody was diluted 1:500 to detect CUL7 in human brain cortex tissue. Tissue was formalin fixed and paraffin embedded. No pre-treatment of sample was required. The image shows the localization of antibody as the precipitated red signal, with a hematoxylin purple nuclear counter stain.