

Product datasheet for **TA319377**

Pogz Rabbit Polyclonal Antibody

Product data:

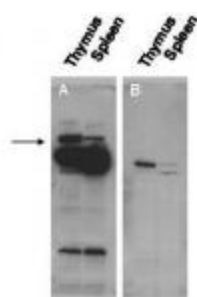
Product Type:	Primary Antibodies
Applications:	WB
Recommended Dilution:	ELISA: 1:100,000 to 1:400,000, WB: 1:2,000 to 1:20,000
Reactivity:	Human, Dog, Bovine, Macaque, Chicken, Rat, Chimpanzee, Opossum, Baboon
Host:	Rabbit
Isotype:	IgG
Clonality:	Polyclonal
Immunogen:	This affinity purified antibody was prepared from whole rabbit serum produced by repeated immunizations with a synthetic peptide corresponding to a region near the N-terminus of mouse Pogz protein.
Formulation:	0.02 M Potassium Phosphate, 0.15 M Sodium Chloride, pH 7.2
Concentration:	lot specific
Conjugation:	Unconjugated
Storage:	Store at -20°C as received.
Stability:	Stable for 12 months from date of receipt.
Gene Name:	pogo transposable element with ZNF domain
Database Link:	NP_766271 Entrez Gene 23126 Human Entrez Gene 310658 Rat Entrez Gene 100856450 Dog Q8BZH4
Synonyms:	KIAA0461; MGC71543; OTTHUMP00000014469; SUHW5; ZNF280E; ZNF635; ZNF635m



[View online »](#)

Note: This antibody is suitable for Cancer, Immunology and Nuclear Signaling research. Pogz is a zinc-finger protein containing at least 8 C2H2 zinc fingers, a CENP-B (centromere protein-B) domain, and a DDE domain found in the bacterial transposase/retroviral integrase family. Members of this family of integrases share structural homologies and show similar catalytic activity to the RAG1 and RAG2 proteins that initiate V(D)J recombination in lymphoid progenitors. Mouse Pogz has a human homolog with a base pair similarity of 90% and amino acid similarity of 93% for the full length protein. In humans at least 3 variants have been predicted and they are all similar at the N-terminus. A number of expressed sequence tags (ESTs) cloned from murine undifferentiated ES cells and Lin-/c-Kit+/Sca-1+ hematopoietic stem cell cDNA libraries correspond to the Pogz gene, further underlining an important function for this gene in stem cells. In mice, deletion of the gene in all tissues early in embryogenesis has been shown to be lethal.

Product images:



Western blot using affinity purified anti-Pogz antibody shows detection of Pogz protein (arrowhead) in adult mouse thymus and spleen tissue lysate (Panel A). The lower molecular weight bands may be cross reactive proteins. Pre-incubation of antibody with the immunizing peptide blocks specific antibody reactivity (Panel B). Primary antibody was used at 1:20,000. Personal Communication, K.O. Gudmundsson and J. Keller, NCI, Frederick, MD.