

Product datasheet for **TA319375**

Nrf1 Rabbit Polyclonal Antibody

Product data:

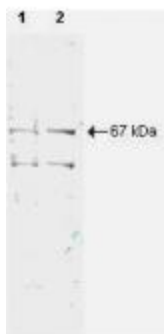
Product Type:	Primary Antibodies
Applications:	IHC, WB
Recommended Dilution:	ELISA: 1:3,000 - 1:10,000, WB: 1:500 - 1:2,000, IHC: 2 mg/ml - 5 ug/ml
Reactivity:	Mouse
Host:	Rabbit
Isotype:	IgG
Clonality:	Polyclonal
Immunogen:	This protein A purified antibody was prepared from whole rabbit serum produced by repeated immunizations with a purified recombinant mouse NRF1 protein corresponding to aa 1- 534 of the native protein.
Formulation:	0.02 M Potassium Phosphate, 0.15 M Sodium Chloride, pH 7.2
Concentration:	lot specific
Conjugation:	Unconjugated
Storage:	Store at -20°C as received.
Stability:	Stable for 12 months from date of receipt.
Gene Name:	nuclear respiratory factor 1
Database Link:	NP_035068 Entrez Gene 18181 Mouse Q9WU00
Synonyms:	ALPHA-PAL; EWG; NRF-1; OTTHUMP00000184912



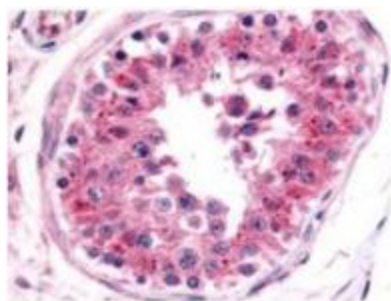
[View online »](#)

Note: NRF1 (also known as nuclear respiratory factor 1, alpha palindromic binding protein and alpha-pal) is the mammalian homolog to the erect wing (ewg) Drosophila protein that is required for proper development of the central nervous system and indirect flight muscles. In mammals NRF1 functions as a transcription factor that activates the expression of the EIF2S1 (EIF2-alpha) gene. This protein links the transcriptional modulation of key metabolic genes to cellular growth and development and has been implicated in the control of nuclear genes required for respiration, heme biosynthesis, and mitochondrial DNA transcription and replication. NRF1 forms a homodimer and binds DNA as a dimer. NRF1 shows a nuclear localization and is widely expressed in embryonic, fetal, and adult tissues. Phosphorylation of NRF1 enhances DNA binding. Multiple splice variants have been identified for this protein.

Product images:



WB using anti-NRF1 antibody shows detection of a 67-kDa band corresponding to human NRF1 in a (lane 1) HeLa nuclear extract and (lane 2) whole cell lysate (molecular weight marker not shown). Approx. 10 ug of each lysate was separated by SDS-PAGE and transferred onto nitrocellulose. The blot was incubated with a 1:500 dilution of the antibody at RT for 1 h followed by detection using IRDye™700 labeled Goat-a-Rabbit IgG [H&L] (611-130-122) diluted 1:2, 500.



Affinity Purified anti-NRF1 antibody was used at a 5 ug/ml to detect NRF1 in a variety of tissues. This image shows NRF1 staining of human testis. The antibody shows nuclear staining in lymphocytes. Tissue was formalin-fixed and paraffin embedded. Personal Communication, Tina Roush, LifeSpanBiosciences, Seattle, WA.