

Product datasheet for **TA319374**

Stat5a Rabbit Polyclonal Antibody

Product data:

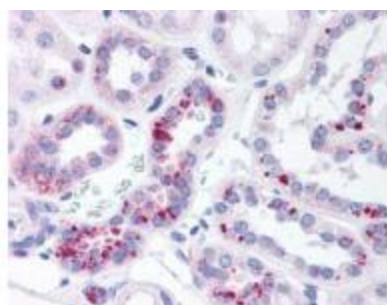
Product Type:	Primary Antibodies
Applications:	IHC, WB
Recommended Dilution:	ELISA: 1:25,000, WB: 1:500 - 1:2,000, IHC: 20-40 ug/ml
Reactivity:	Human, Mouse, Rat
Modifications:	Phospho-specific
Host:	Rabbit
Isotype:	IgG
Clonality:	Polyclonal
Immunogen:	This affinity purified antibody was prepared from whole rabbit serum produced by repeated immunizations with a synthetic peptide corresponding to residues surrounding Y694 of mouse STAT5a protein.
Formulation:	0.02 M Potassium Phosphate, 0.15 M Sodium Chloride, pH 7.2
Concentration:	lot specific
Conjugation:	Unconjugated
Storage:	Store at -20°C as received.
Stability:	Stable for 12 months from date of receipt.
Gene Name:	signal transducer and activator of transcription 5A
Database Link:	NP_035618 Entrez Gene 6776 Human Entrez Gene 24918 Rat Entrez Gene 20850 Mouse P42230
Synonyms:	MGF; STAT5
Note:	This antibody is suitable for Cancer, Immunology and Nuclear Signaling research. Signal transducer and activator of transcription 5 (Stat5) belongs to a family of cytoplasmic transcription factors that can be activated (phosphorylated) by a cell surface receptor. Phosphorylation at Tyr694 is obligatory for Stat5 activation. Stat5 has two isoforms, Stat5a and Stat5b. Aberrant Stat5 activation has been implicated in the pathogenesis of chronic myelogenous leukemia, prostate and breast cancer and tumor metastasis. Stat5 is localized in the cytoplasm and upon phosphorylation at Y694 is translocated to the nucleus.



[View online »](#)

Product images:

Western blot using affinity purified anti-Stat5 pY694 antibody shows detection of phosphorylated Stat5 (indicated by arrowhead at ~91 kDa) in NK92 cells after 30 min treatment with 1Ku of IL-2 (lane 2). No reactivity is seen for non-phosphorylated Stat5 in untreated cells (lane 1). The membrane was probed with the primary antibody at a 1:1,000 dilution, overnight at 4°C. Personal Communication from Ana Gamero, CCR-NCI, Bethesda, MD.



Anti-Stat5 pY694 antibody was used at 20ug/ml to detect signal in a variety of tissues including multi-human, multi-brain and multi-cancer slides. This image shows moderate positive staining of distal convoluted tubules and collecting ducts of human kidney at 40X. Tissue was formalin-fixed and paraffin embedded. The image shows localization of the antibody as the precipitated red signal, with a hematoxylin purple nuclear counterstain.